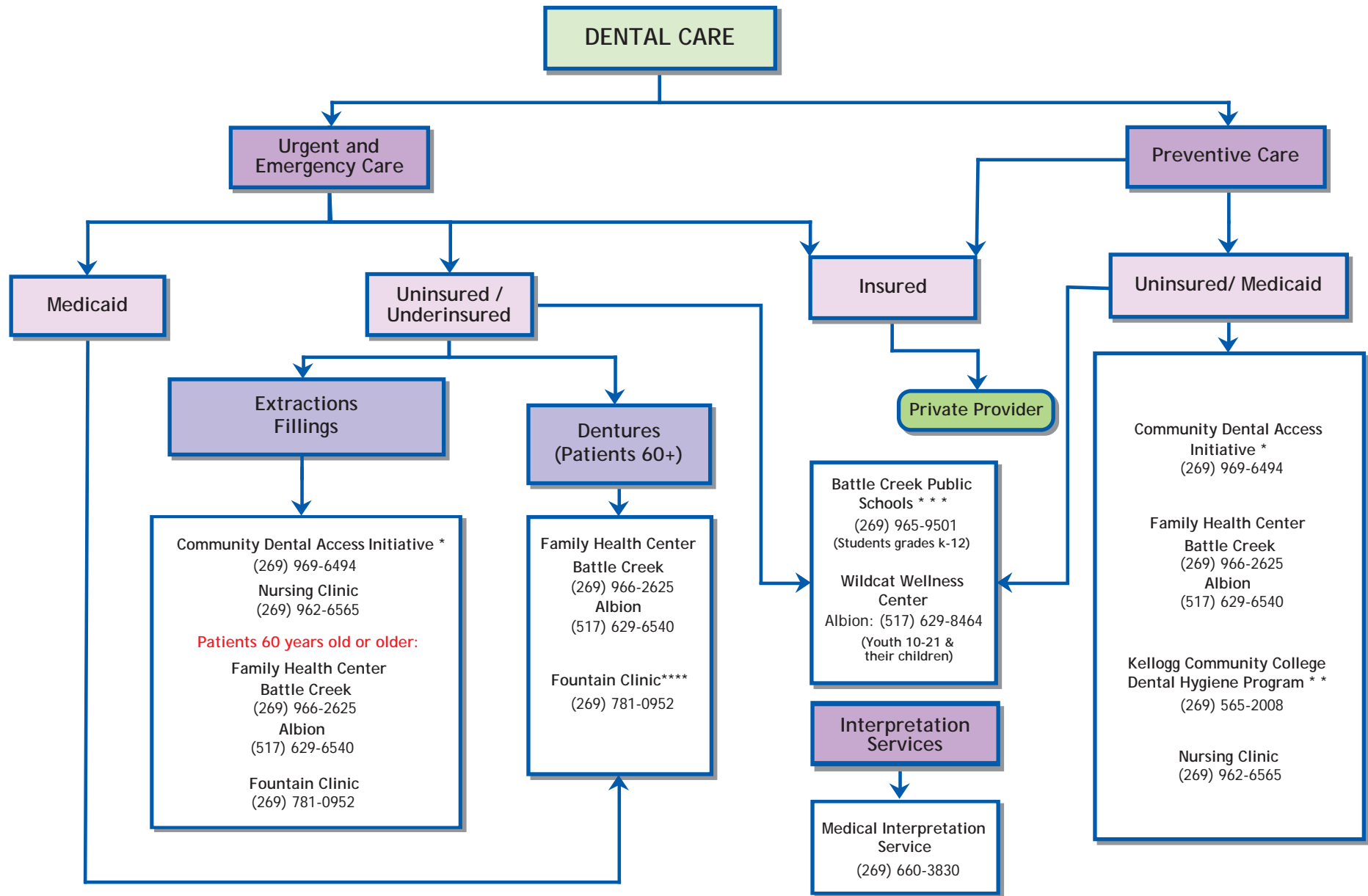




Information and Referral Trees to access the following services in Calhoun County:

- **Dental Care**
- **Domestic Violence & Sexual Assault**
- **Education and Training**
- **Emergency Assistance**
- **Financial Services**
- **Health Care for the Uninsured**
- **Housing Assistance**
- **Literacy Services**
- **Medical Transportation**
- **Mental Health**
- **Prenatal / Obstetrics**
- **Public Benefits**
- **Senior Health Services**
- **Senior Housing**
- **Senior Services**
- **Substance Abuse**
- **Teen Pregnancy Resources**
- **Veterans Benefits**
- **Women's Health**
- **Youth Services**



NOTES:

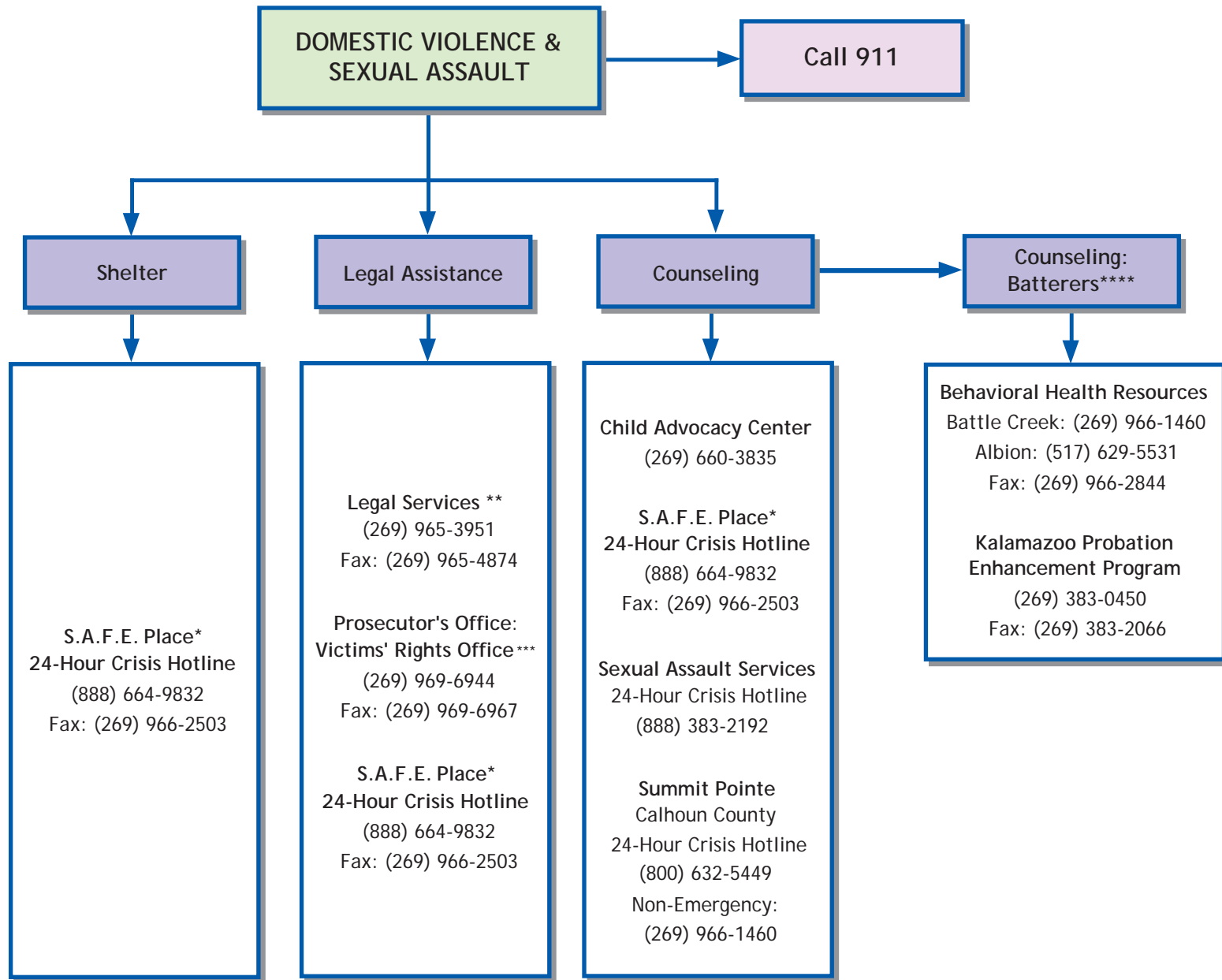
* The Community Dental Access Initiative is coordinated by the Calhoun Health Plan. All ages of Calhoun County residents are served, at or below 200% of the Federal Poverty Level. Services provided through the volunteer efforts of private practice dentists, the Fountain Clinic, and the Nursing Clinic of Battle Creek.

** The KCC Dental Hygiene Program is preventive only. This program accepts all individuals, regardless of income/ insurance status and accepts only cash.

*** Dental Services offered through Battle Creek Public Schools are for students of Battle Creek Public Schools who qualify for free or reduced lunch.

**** Fountain Clinic does not accept Medicaid.

> Additional information is available by calling 211, an information and referral line for health/human services.



NOTES:

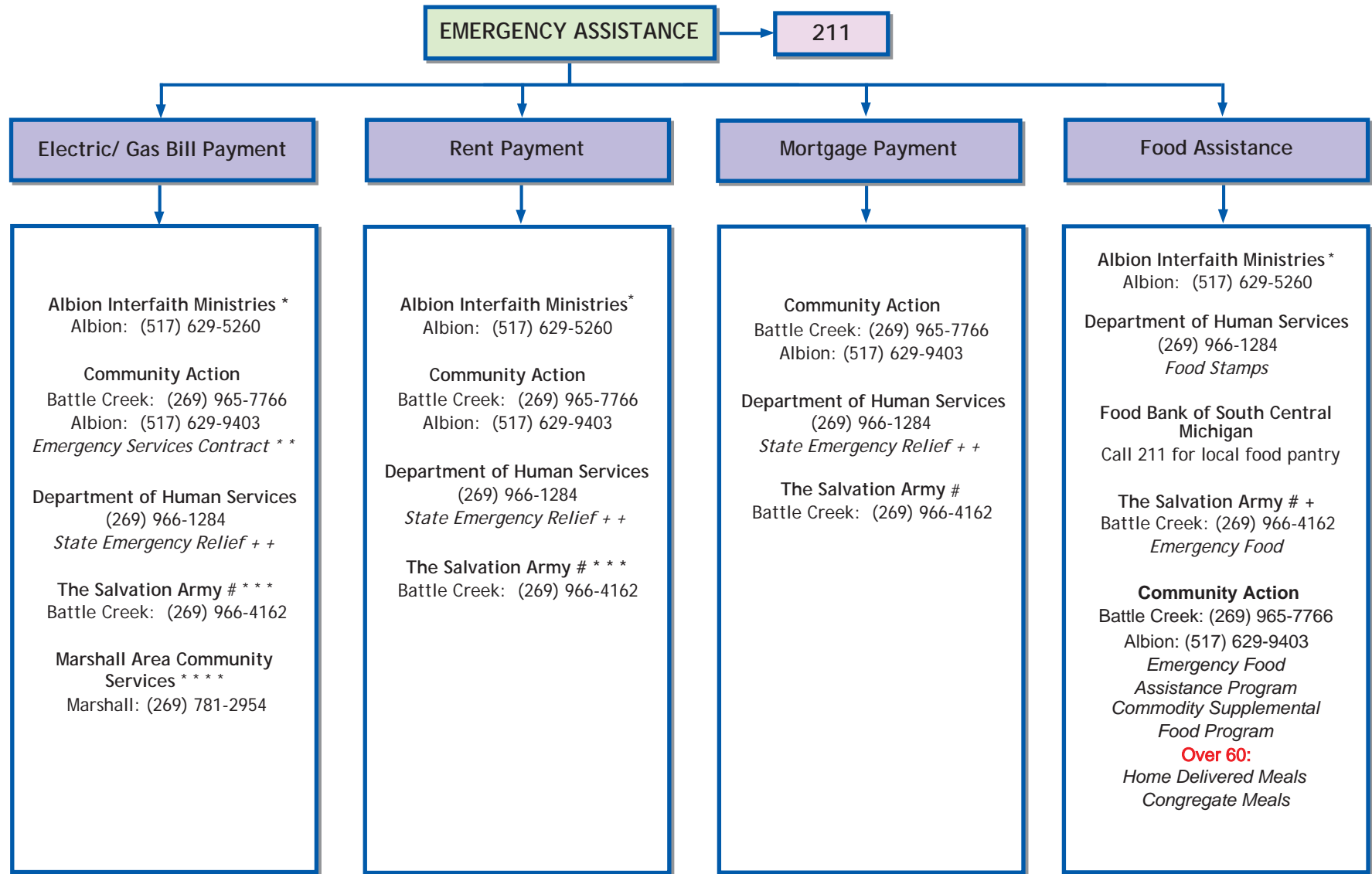
* S.A.F.E. Place shelter services available for victims of intimate partner violence and their children.

** Legal Services clients must meet poverty criteria.

*** The Police Department makes a referral to the Victims Rights Office after a police report has been filed.

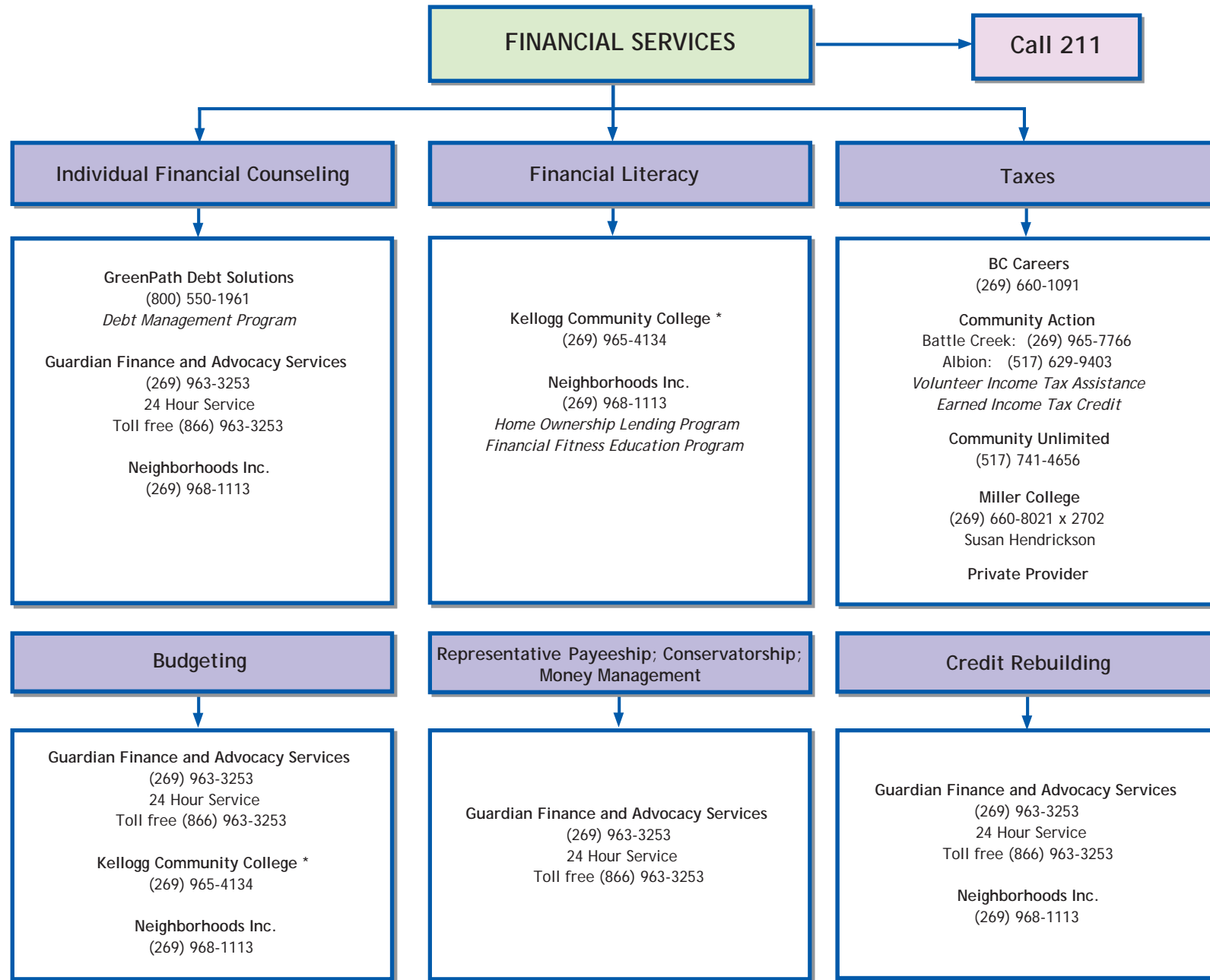
**** Behavioral Health Resources and Kalamazoo Probation Enhancement Program meet the Governor's standards for batterer intervention programming for males.

> Additional information is available by calling 211, an information and referral line for health/human services.



NOTES:

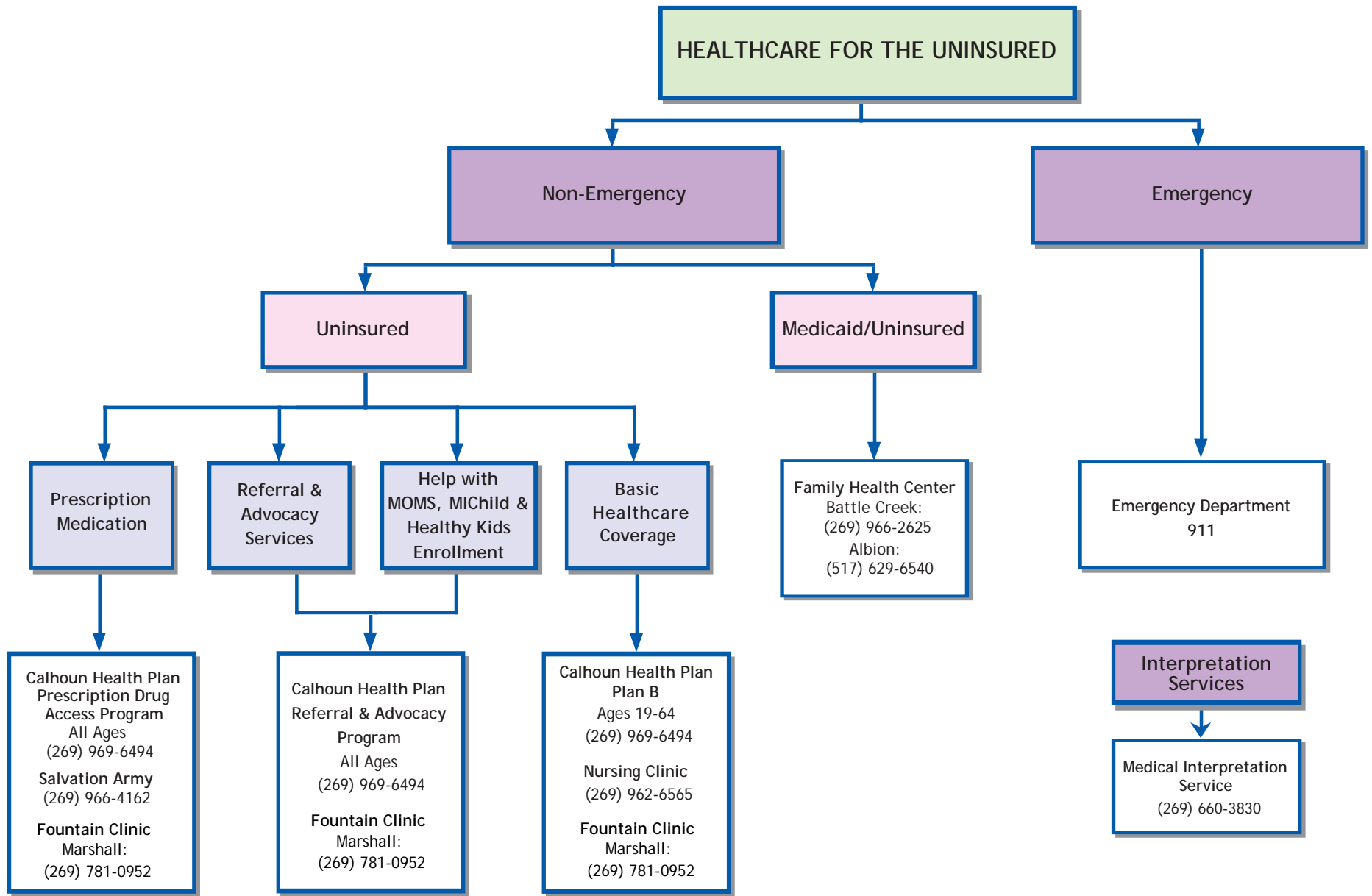
- # Must be referred through 211
- * AIM serves residents of Albion and Homer only after all other agencies have denied services. Does not cover reconnection fees for utilities.
- ** One time emergency use annually.
- *** Salvation Army must have shut off notice and client must demonstrate the ability to pay the following month.
- **** Bill pay can be used once per year. Only for Marshall residents. Must have shutoff notice and have applied at DHS.
- + Provides 5 days of groceries. Can be accessed four times per year.
- + + State Emergency Relief for bill payment has an annual maximum, at this time it is \$350.00. Must have a shut off notice or eviction notice to access services.
- > Additional information is available by calling 211, an information and referral line for health/human services



NOTES:

* At Kellogg Community College various classes are offered for a fee.

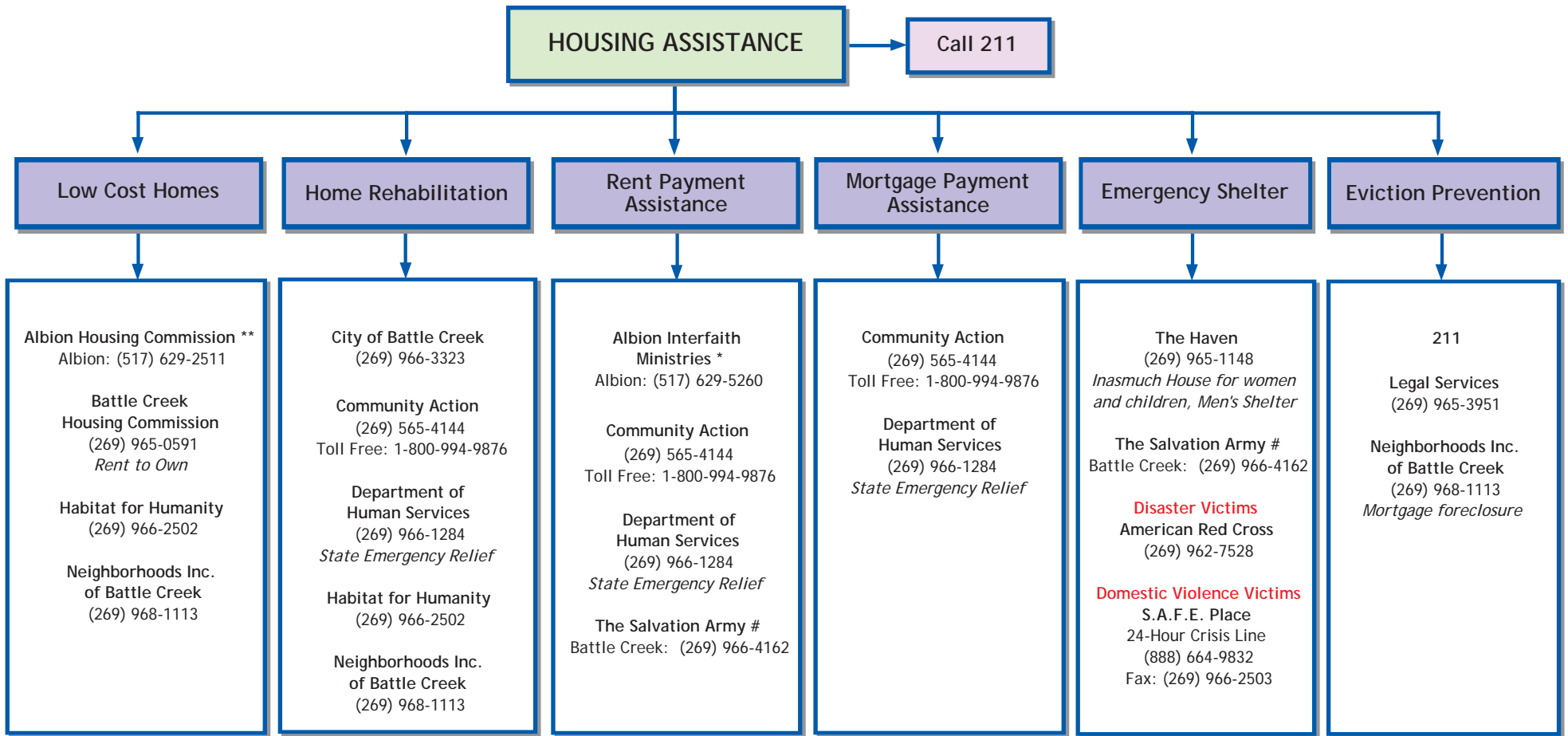
> Additional information is available by calling 211, an information and referral line for health/human services.



NOTES:

* Calhoun Health Plan serves as a resource for the uninsured and underinsured residents of Calhoun County. They serve all ages and there are no fees.

> Additional information is available by calling 211, an information and referral line for health/ human services.



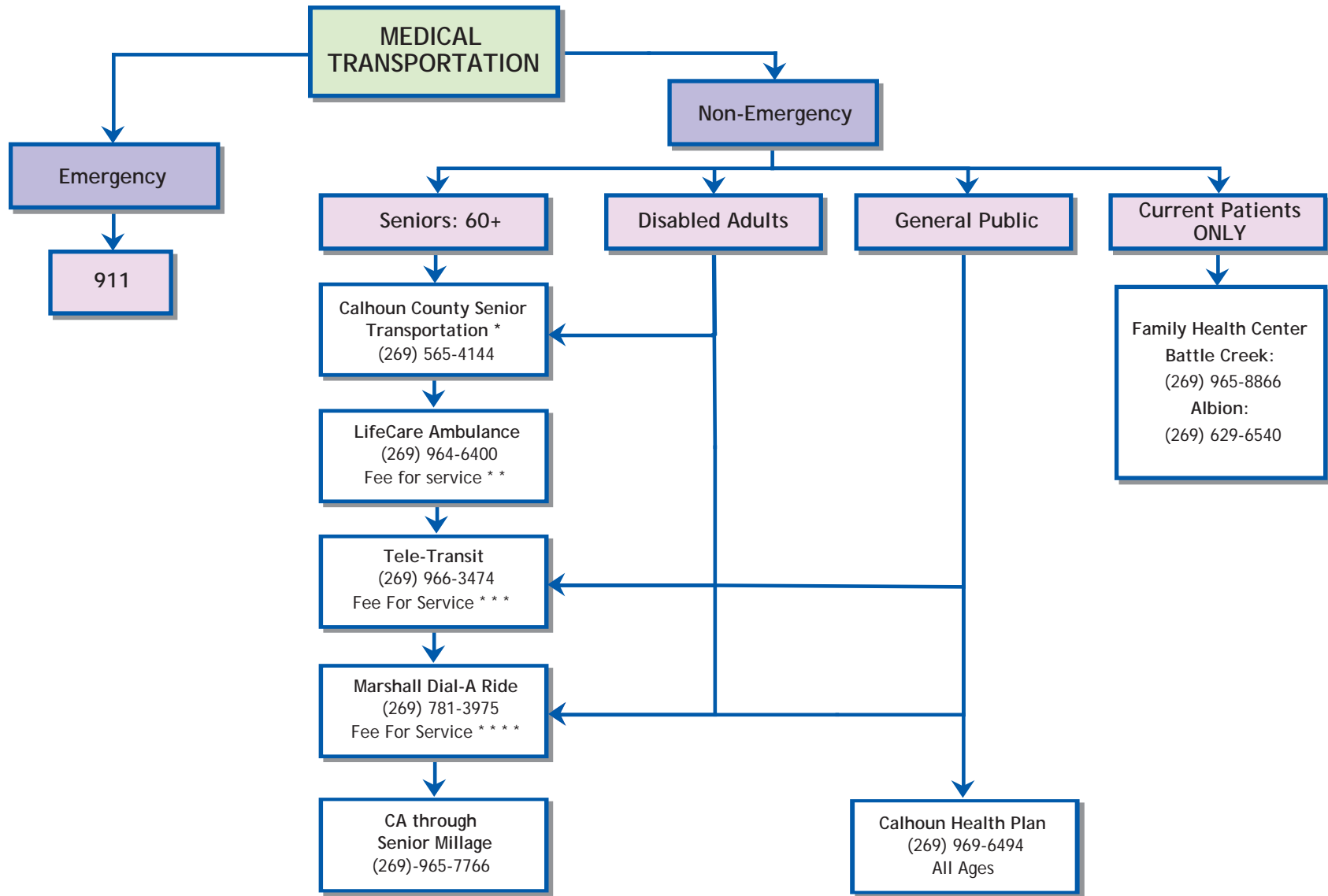
NOTES:

Must be referred through 211

* Services through Albion Interfaith Ministries (AIM) are available to residents of Albion and Homer when all other services are denied. Requires referral through 211.

**Must have documentable income, and no felonies on record.

> Additional information is available by calling 211, an information and referral line for health/human services.



NOTES:

* Calhoun County Senior Transportation services are available for medical and non-medical transportation for Calhoun County residents traveling within Calhoun County

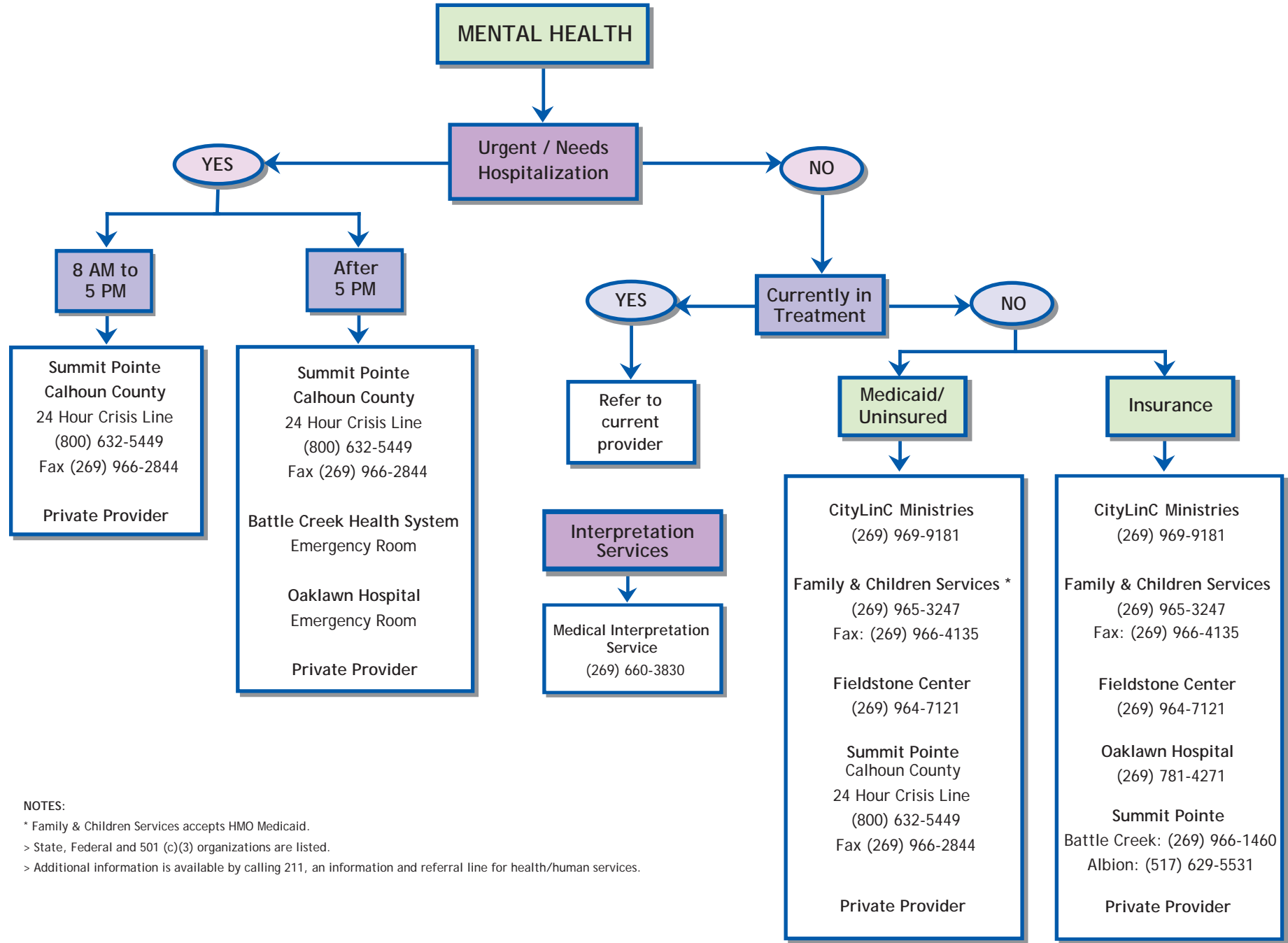
** LifeCare offers Non-Emergency transportation services for a fee as follows: FARES: \$60 roundtrip up to 10 miles, \$2.25 each additional mile; \$40 one way up to 10 miles, \$2.25 each additional mile for non-members. \$40 roundtrip up to 10 miles, \$2.25 each additional mile; \$25 one way up to 10 miles, \$2.25 each additional mile for members. Transportation is available to destinations outside of Calhoun County.

*** Tele-Transit available for all transportation services on M-F, 5:15 AM to 11:30PM; Sat 9:15 AM - 5:15 PM. FARES: \$7.00 each way; \$2 for elderly/disabled. Disabled must show transit I.D. or Medicare I.D. Card to receive \$2 fee. Passengers must be able to get themselves to the vehicle. Area Limitations: Kirby Road, B Drive North, Glenn Cross Road, St. Mary's Lake Road, 11 Mile Road.

**** Marshall Dial-A-Ride is available Monday-Friday from 7 a.m. to 6 p.m. and on Saturday from 9 a.m. to 5 p.m. Advance scheduling is recommended.

FARES: In-Town- Adults/Children over 12 years of Age: \$2; Seniors 60+/children 12 years or younger \$1. Limited out of town service: Adults/Children over 12 years of Age: \$3; Seniors 60+/children 12 years or younger \$2. Exact change or tokens are required.

> Additional information is available by calling 211, an information and referral line for health/human services.



NOTES:

- * Family & Children Services accepts HMO Medicaid.
- > State, Federal and 501 (c)(3) organizations are listed.
- > Additional information is available by calling 211, an information and referral line for health/human services.

LITERACY

Adult Education and Literacy Programs

Battle Creek Family YMCA Literacy Program
(269) 788-0495

Battle Creek Public Schools Adult Education Miller-Stone Building
(269) 965-9514

Kellogg Community College (pre-college reading courses)
Academic Advising
(269) 965-4124

Sylvan Learning Center (free consultation; fee for service)
(269) 979-0025

G.E.D. Preparation

Battle Creek Family YMCA Literacy Programs
(269)-788-0495

Battle Creek Public Schools Adult Education
(269) 965-9514

English Programs for Non-Native Speakers

Battle Creek Cultural Learning Center (First Assembly of God Church)
(269) 965-7058
ask for David Medrano

Battle Creek Family YMCA Literacy Program
(269) 788-0495

Battle Creek Language and Culture Center (fee)
(269) 979-8432
ask for Carol Kubota

Battle Creek Public Schools Adult Education
(269) 965-9534
ask for Mary Brandimore

Christ Community Church ESL Class
(269) 979-2271
ask for Kevin Cloufe

ESL through POBLO (St. Paul Lutheran Church)
(269) 968-3055
ask for Dean Vincent Iqbal

Kellogg Community College English as a Second Language (ENGL96)
(269) 965-3931

St. Mark Lutheran Church ESL Classes
(269) 964-0401

Early Childhood Reading Readiness

Barnes and Noble (free story time)
(269) 979-8060

Calhoun Intermediate School District Early Childhood Programs & Services
(269) 660-1606 x 6143
Child Development Concerns
(269) 660-2732

Child Care Resource and Referral
(866) 424-4532

Community Action
(269) 965-7769

Early Childhood Stakeholders, Great Start Collaborative Body
(269) 660-1606 x 6140

Early Beginnings Literacy Collaborative-EBLC & CLC
www.battlecreekliteracy.org

Great Start Readiness Program
Contact your local school district

Kellogg Community College
(269) 965-3931x 2399

Willard Library
(269) 968-8166

Employment Training and Assistance

Battle Creek Self Employment Program
(269) 962-8996

Michigan Works!
(800) 285-9675

National Career Readiness Certificate
Kellogg Community College
(269) 965-3931

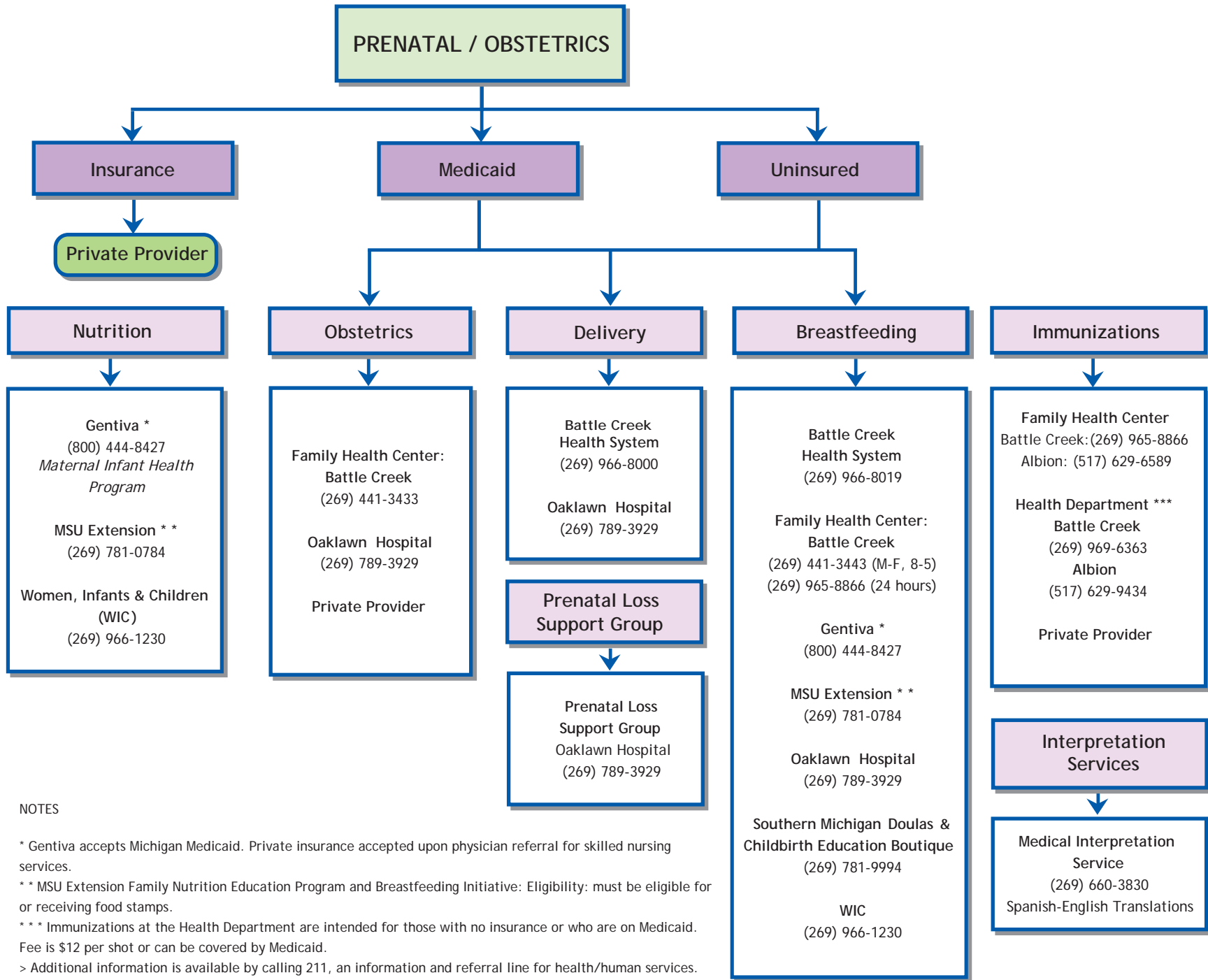
Preparing Workers for the 21st Century Employment
(269) 965-9675

G.E.D. Testing Sites

Battle Creek Public Schools Adult Education
(269) 965-9514

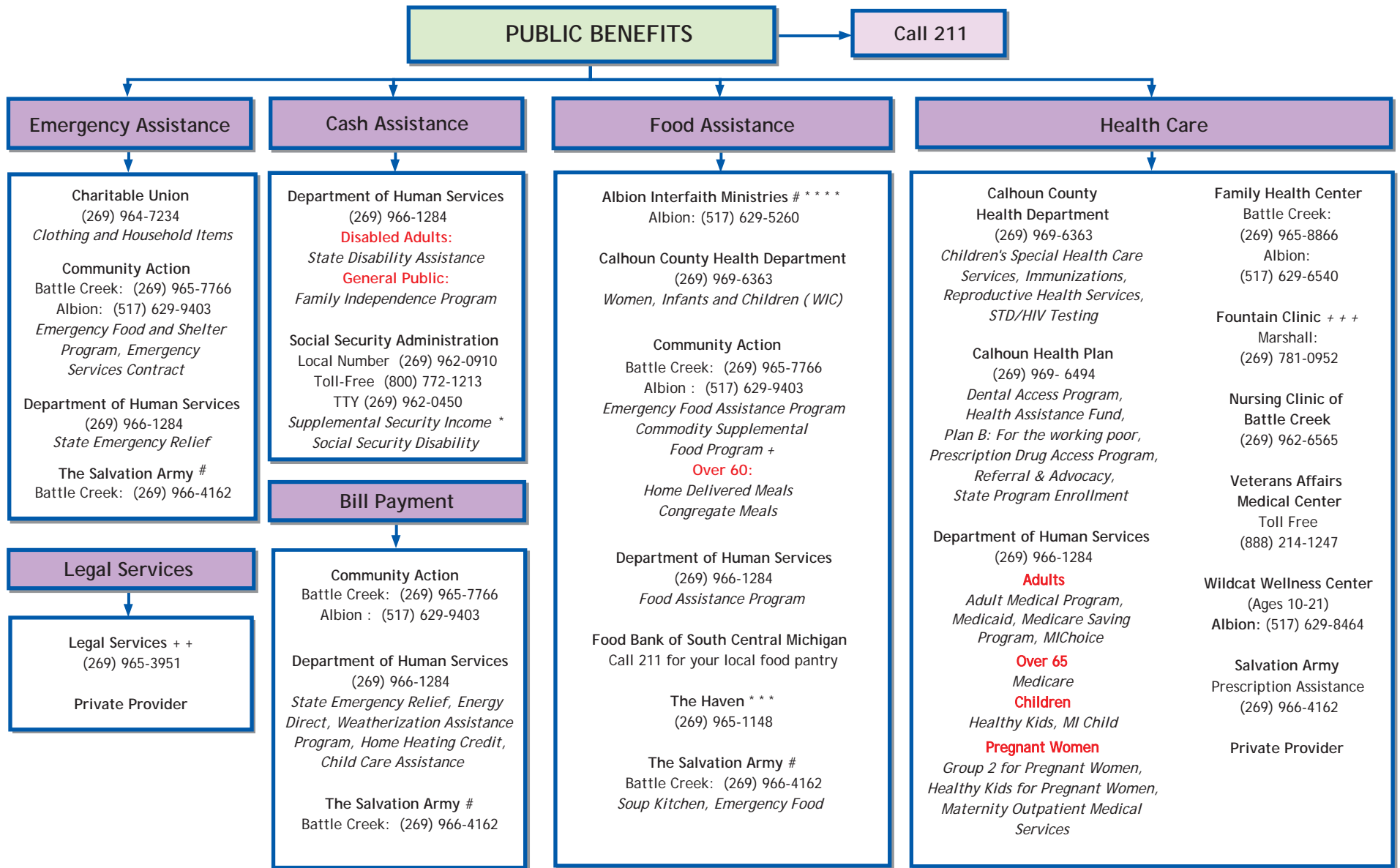
Harper Creek High School (by appointment only)
(269) 441-8412
ask for Steve Guerra

Lakeview School District
(269) 565-2415



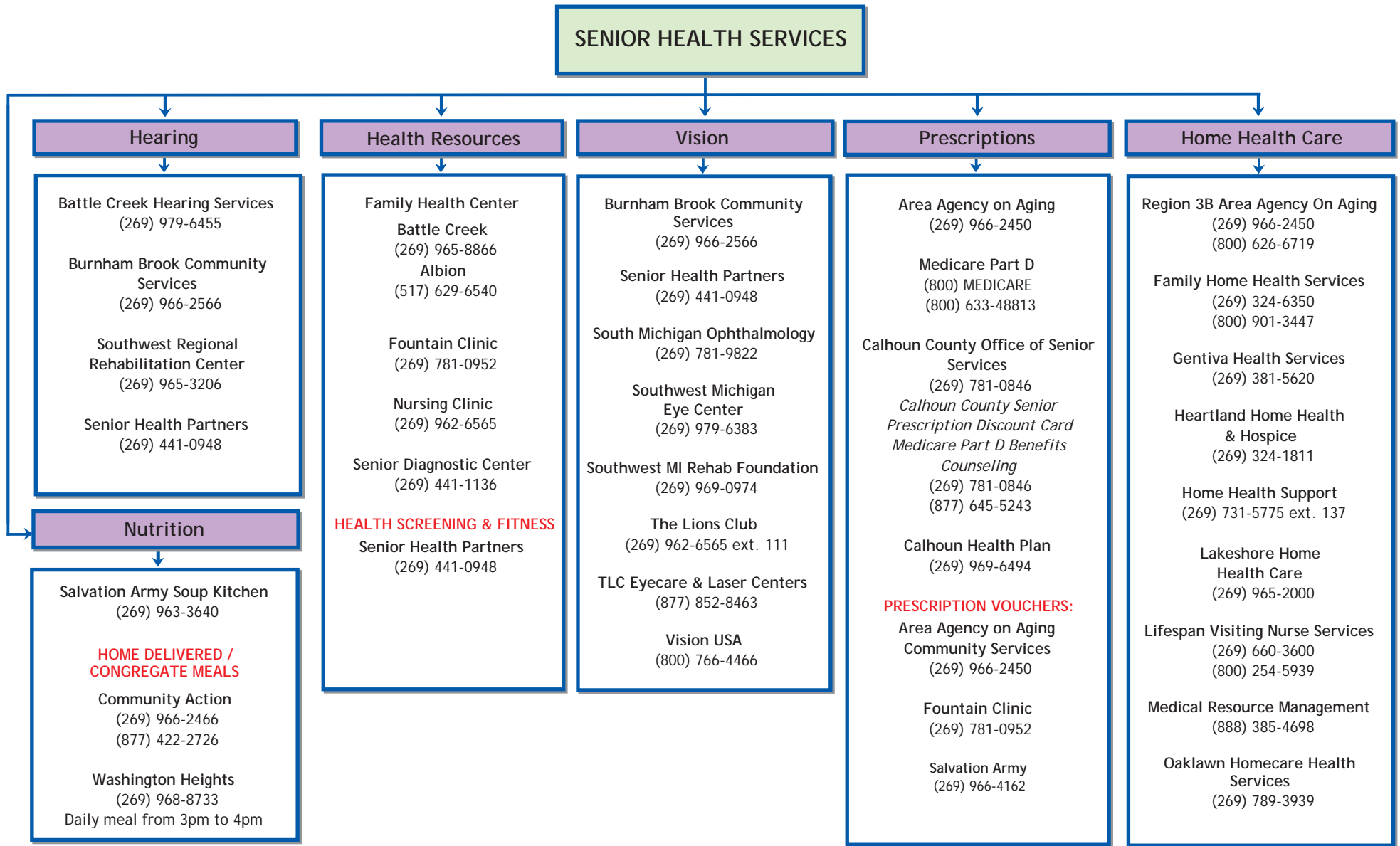
NOTES

- * Gentiva accepts Michigan Medicaid. Private insurance accepted upon physician referral for skilled nursing services.
- ** MSU Extension Family Nutrition Education Program and Breastfeeding Initiative: Eligibility: must be eligible for or receiving food stamps.
- *** Immunizations at the Health Department are intended for those with no insurance or who are on Medicaid. Fee is \$12 per shot or can be covered by Medicaid.
- > Additional information is available by calling 211, an information and referral line for health/human services.



NOTES:

- # Must be referred through 211
- * SSI is for individuals who are over 65, blind or disabled with limited income, based on need.
- ** SSDI is based on how long you have worked and paid Social Security taxes.
- *** The Haven serves free meals on holidays and weekends when Salvation Army Soup Kitchen is closed.
- **** Albion Interfaith Ministries serves residents of Albion and Homer; assistance can only be accessed after all other agencies have denied services. Must have referral from 211.
- + For women who are pregnant, nursing or have children under 6 and are not covered by WIC. Must be income eligible. No fee.
- ++ Legal Services offers representation for denials, overpayment cases, and cutoffs for SSI, SSD, Food Stamps, Medicaid, SDA, and cash assistance.
- +++ Fountain Clinic is free for all residents of Calhoun County. Must meet income guidelines and have no form of insurance.
- > Additional information is available by calling 211, an information and referral line for health/ human services.



NOTES:

- > Congregate Meals are offered at various sites in Calhoun County including Albion, Battle Creek, Homer and Marshall. Call CA at (269) 966-2466 for a complete list of sites.
- > Food Pantries are available with a referral from 211 or the Department of Human Services.
- > Senior Housing Resources may be accessed by viewing the Senior Housing page.
- > Additional information is available by calling 211, an information and referral line for health/human services.

SENIOR HOUSING

ADDITIONAL INFORMATION AND ASSISTANCE CAN BE FOUND BY CALLING 211 OR THE MICHIGAN LONGTERM CARE CONNECTION AT 866-MICH-LTC (1-866-642-4582)

Subsidized Independent Living

Independent Living for seniors refers to residence in a compact, easy-to-maintain, private apartment or house within a community of seniors.

- Cherry Hill Manor
(269) 965-0591
- Bedford Manor Apartments
(269) 962-3561
- Emily Andrus
(269) 962-0027
- Kellogg Manor
(269) 965-0591
- Maple Grove Apartments
(517) 629-2026
- Marshall House Apartments
(269) 781-2391
- NorthPointe Woods
(269) 964-7625
- Westbrook Apartments
(269) 753-0062

Assisted Living

Providing a unique combination of housing, personal care services, and health care, assisted living is the perfect option for people who need help with normal daily activities in a way that promotes maximum independence.

The State of Michigan regulates licensing of these types of facilities and the status can change frequently. Please contact Michigan's Long Term Care Connection at (866) MICH-LTC (866) 642-4582 for assistance in finding options in your area.

Skilled Nursing

A Nursing Home, also known as a Skilled Nursing Facility or SNF, has Registered Nurses who help provide 24-hour care to people who can no longer care for themselves due to physical, emotional, or mental conditions.

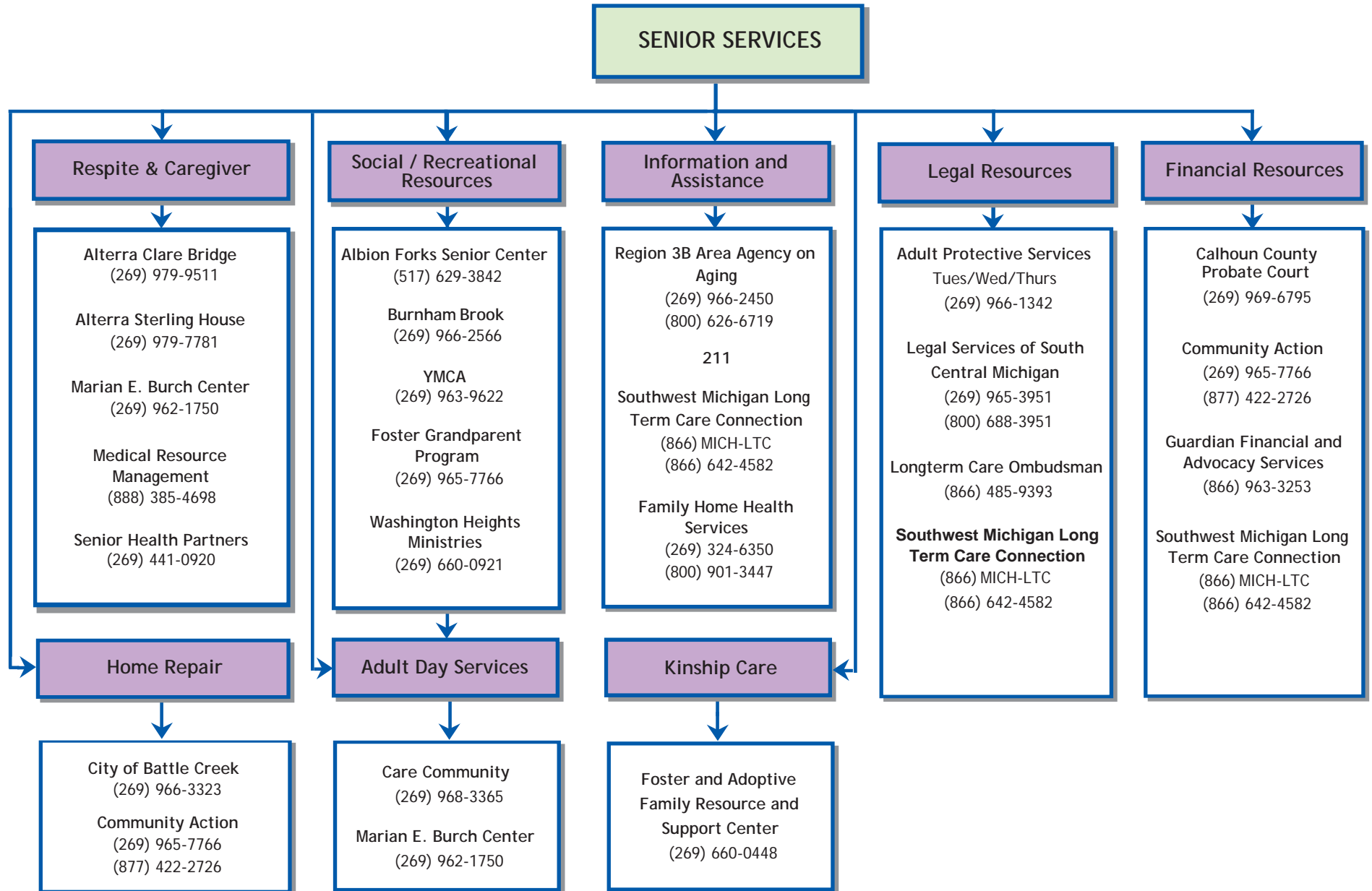
- Calhoun County Medical Care Facility
(269) 962-5458
- Evergreen Manor
(269) 969-6110
- Heartland Health Center
(269) 965-3327
- Laurels of Bedford
(269) 968-2296
- Marshall Nursing and Rehabilitation Community
(269) 781-4281
- Mercy Pavilion
(269) 964-5400
- Tendercare - Albion
(517) 629-5501
- The Manor of Battle Creek
(269) 969-6244
- Tendercare - Marshall
(269) 781-4251

Adult Foster Care

Adult Foster Care is defined as a home setting in the community for adults who are unable to live independently due to physical, emotional, developmental or mental health impairments.

The State of Michigan regulates licensing of these types of facilities and the status can change frequently. Please contact Michigan's Long Term Care Connection at (866) MICH-LTC (866) 642-4582 for assistance in finding options in your area.

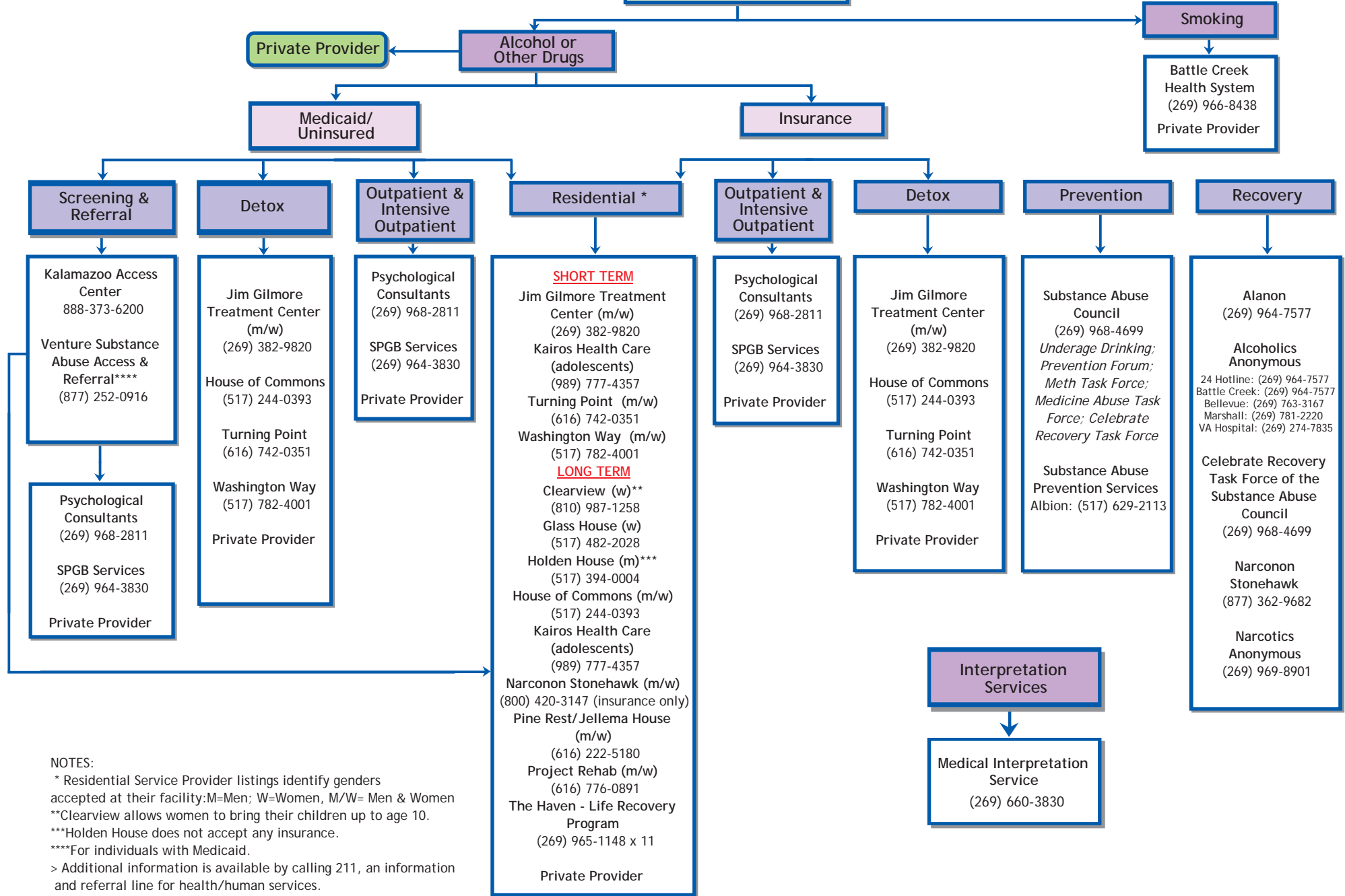
NOTES:
>The Coordinating Council of Calhoun county cannot guarantee/endorse the listed facilities. TCC encourages discretion when choosing a facility and suggests complete investigation into facilities and licensure prior to engaging services.



NOTES

- > Senior Housing Resources may be accessed by viewing the Senior Housing List.
- > Additional information is available by calling 211, an information and referral line for health/human services.

SUBSTANCE ABUSE



NOTES:

* Residential Service Provider listings identify genders accepted at their facility: M=Men; W=Women, M/W= Men & Women
 **Clearview allows women to bring their children up to age 10.
 ***Holden House does not accept any insurance.
 ****For individuals with Medicaid.
 > Additional information is available by calling 211, an information and referral line for health/human services.

TEEN PREGNANCY RESOURCES

Call 211

Pregnancy Testing

CityLinC Ministries
(269) 969-9181 (free)
Crisis Pregnancy Center
(269) 963-6206
Family Health Center * * *
(269) 965-8866
Health Department *
Battle Creek: (269) 969-6363
Albion: (517) 629-9434
Marshall Pregnancy Center
(269) 274-2925 (free)
Planned Parenthood * *
Battle Creek: (269)964-0885
Albion: (517) 629-3910
Wildcat Wellness Center (Ages 10-21)
(517) 629-8464

Prenatal Loss Support Group

Prenatal Loss Support Group
Oaklawn Hospital
(269) 789-3929

Pregnancy Prevention Resources

Prevention Education
Kids at Hope: (517)-629-0680
Substance Abuse Prevention Services:
(517) 629-2113
Planned Parenthood
Battle Creek: (269) 964-0885
Albion: (517) 629-3910
Wildcat Wellness Center Albion (Ages 10-21)
(517) 629-8464
Goals/Leadership/Decision Making/Family
Battle Creek Area Education & Health
(269) 565-3903
Planned Parenthood
Battle Creek: (269) 964-0885
Substance Abuse Council: (269) 968-4699
Summit Pointe: (269) 966-1460
Teen Heart: (269) 342-8336
Teen Pregnancy Prevention: (269) 969-6363
Contraceptives
Family Health Center * * *
Battle Creek: (269) 965-8866
Albion: (517) 629-6540
Health Department (condoms only)
Battle Creek: (269) 969-6363
Albion: (517) 629-9434
Planned Parenthood
Battle Creek: (269) 964-0885
STD Testing
Family Health Center
Battle Creek: (269) 965-8866
Albion: (269) 629-6540
Health Department
Battle Creek: (269) 969-6363
Albion: (517) 629-9434
Planned Parenthood * *
Battle Creek: (269) 964-0885
Wildcat Wellness Center (Ages 10-21)
(517) 629-8464
Private Provider

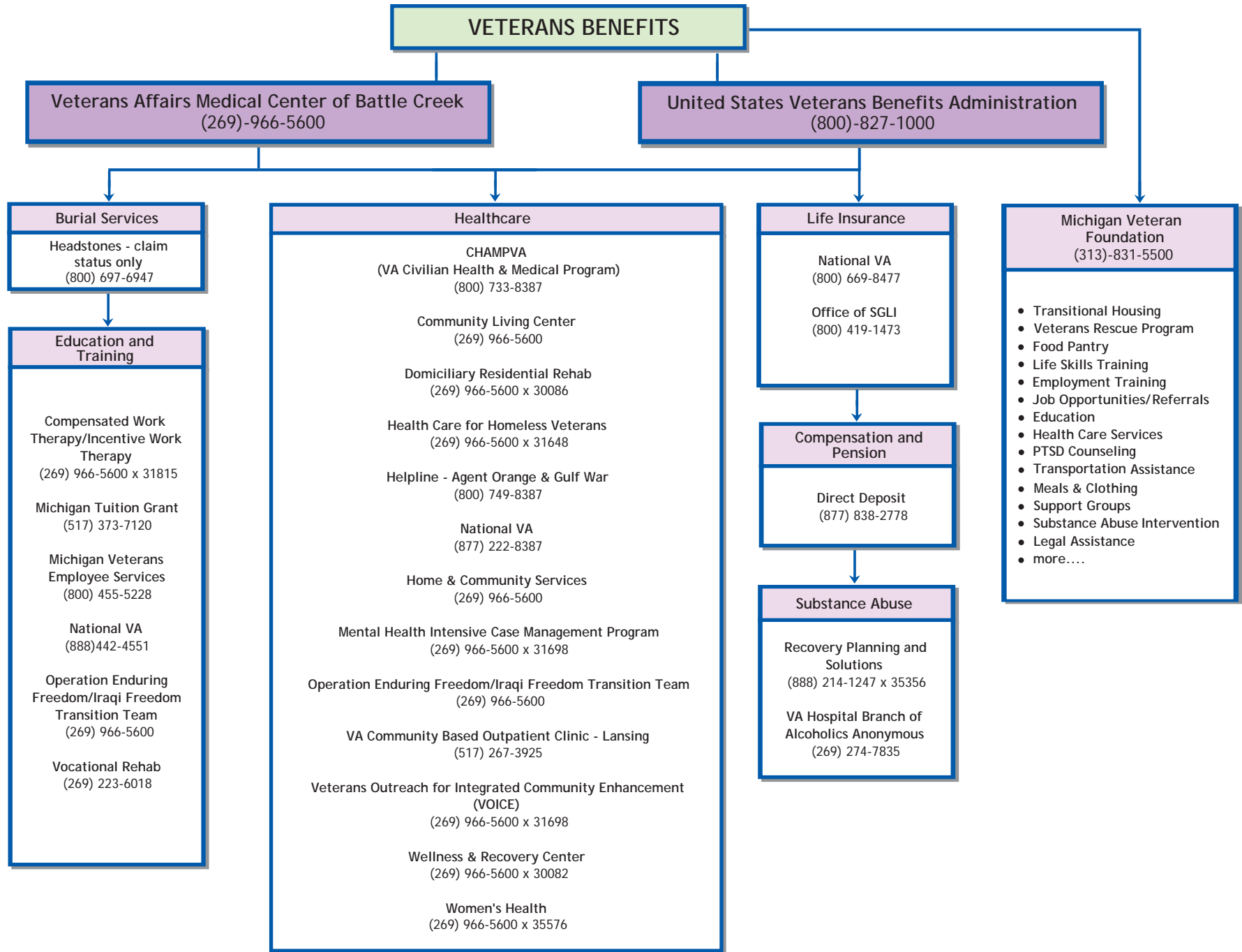
Resources for Pregnant Teens

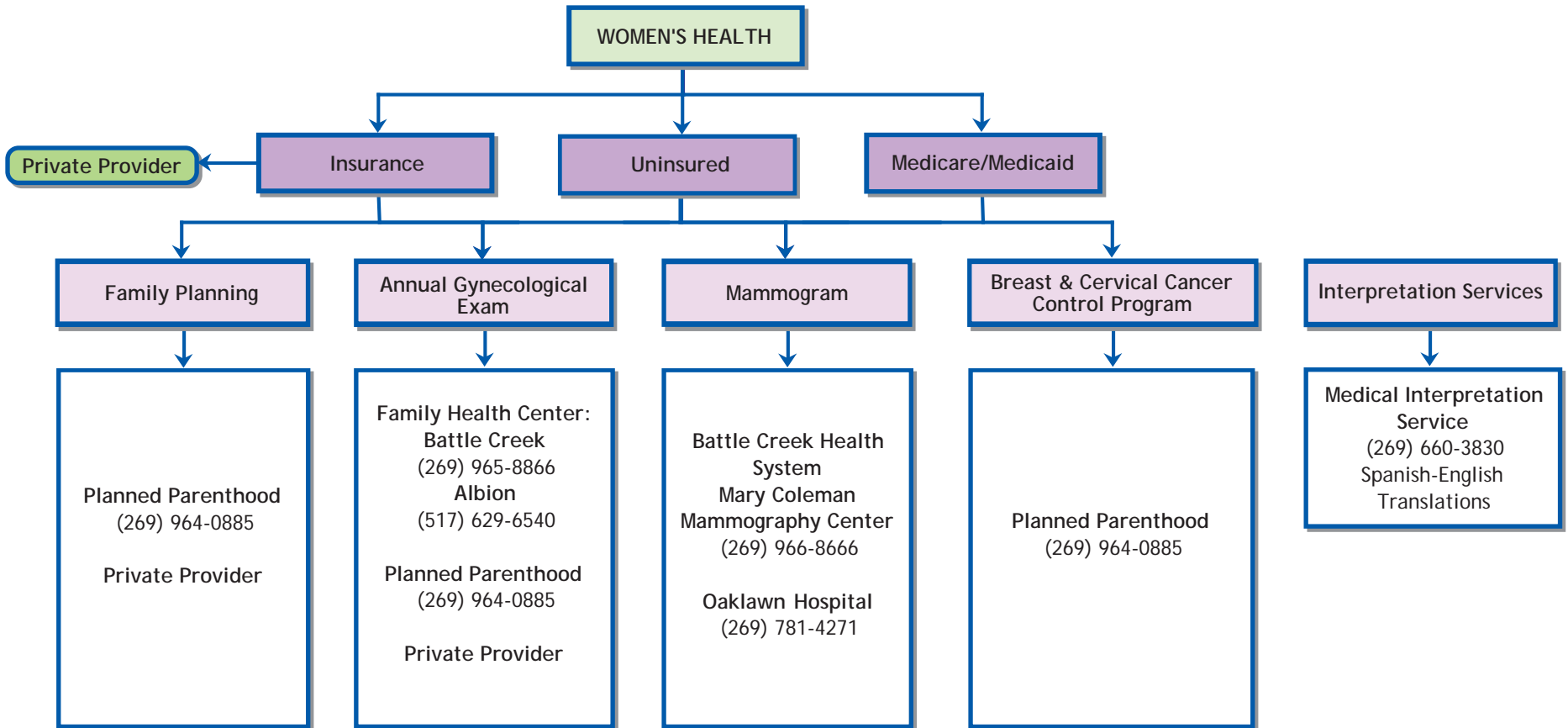
Childbirth Education
Battle Creek Health Systems * * * *
(269) 966-8019
Oaklawn Hospital +
(269) 789-3929
Nutrition
MSU Extension (Education)
(269) 781-0784
Southern Michigan Doulas and Childbirth
Education Boutique: (269) 781-9994
Women Infant Children (WIC): (269) 966-1230
Breastfeeding Education
Battle Creek Health Systems (free): (269) 966-8019
Family Health Center
Battle Creek: (269) 441-3443 (Business Hours)
24 Hour and Weekend line: (269) 965-8866
Gentiva: (800) 444-8427 + + +
Maternal Infant Health Program
MSU Extension: (269) 781-0784 + + + +
Oaklawn Hospital: (269) 789-3929 +
Southern Michigan Doulas and Childbirth
Education Boutique: (269) 781-9994
Women Infants & Children (WIC): (269) 966-1230
Teen Parent Programs
Calhoun Area Career Center
(269) 968-2271 x 229
Family & Children Services: (269) 965-3247
Medicaid for Pregnant Women
Calhoun Health Plan - MOMS Program
(269) 969-6494
Department of Human Services: (269) 966-1284
Women Infants & Children (WIC): (269) 966-1230
Obstetrics
Family Health Center
Battle Creek: (269) 441-3443
All Options Counseling
Planned Parenthood
Battle Creek (269) 964-0885
Albion (517) 629-3910
Private Provider

Resources for Teen Parents

Alternative Education
Calhoun Area Career Center
(269) 968-2271 x 229
Immunizations
Family Health Center
Battle Creek: (269) 965-8866
Albion: (517) 629-6589
Health Department + +
Battle Creek: (269) 969-6363
Albion: (517) 629-9434
Wildcat Wellness Center (Ages 10-21)
(517) 629-8464
Child Care
CARE Program: (269) 781-4443
Child Care Resources
(269) 349-3296 or 1-800-343-3470
Insurance/Financial Resources
Calhoun Health Plan (ages 19-64)
(269) 969-6462
Department of Human Services: (296) 966-1284
Resources for infant needs
Albion Interfaith Ministries: (517) 629-5260
Car Seat Information: (269) 962-2562
Gentiva: (800) 444-8427 + + +
Maternal Infant Health Program
Infant Safe Sleep information: (800) 331-7437
Showers for Blessings: (269) 963-1253
Nutrition
Women Infants & Children (WIC)
(269) 966-1230
Early Childhood Education
CAA Head Start
(269) 965-7769
CARE Program
(269) 781-4443
Calhoun Intermediate School District
(269) 660-1606
Teen Parent Programs
Family & Children Services: (269) 965-3247
Private Provider

NOTES:
* Pregnancy testing is \$10 or can be covered by Medicaid.
* * Pregnancy tests \$6; free for those who qualify by income.
* * * For established patients only.
* * * * Fee for BCHS childbirth class is \$35.
+ \$40 for all classes offered or free if on Medicaid.
+ + Immunizations are for those with no insurance or who are on Medicaid. Fee is \$12 per shot or can be covered by Medicaid.
+ + + Accepts Michigan Medicaid. MIHP for Medicaid recipients. Private insurance accepted upon physician referral for skilled nursing services.
+ + + + Must be receiving or eligible for WIC and/or food stamps
> Additional information is available by calling 211, an information and referral line for health/ human services.





NOTES

> Additional information is available by calling 211, an information and referral line for health/human services.

YOUTH SERVICES

FAMILY

The family environment in which the youth is being raised has a large influence over the youth's attitudes and behaviors.

Intensive Family Services

Family & Children Services +
(269) 965-3247 + +
Respite Services, Parenting Workshops, Case Management, Families First, Family and Community Treatment, Home-Based, Family Counseling

Lutheran Social Services +
(269) 964-6180 + +
Home-Based Services, Family Counseling, Families First

Starr Commonwealth +
Albion: (517) 629-5591 + +
Battle Creek: (269) 968-9287
Toll Free: (800) 837-5591
Residential, Sexually Reactive Youth Program, Day Treatment, Treatment Foster Care, Mental Health Counseling, Family Counseling

Summit Pointe
(269) 966-1460 +
Multi-Systemic Therapy, Homebased, Behavioral Health Resources, Individual and Family Counseling, Parenting Groups

Wraparound Services

(269) 441-5904 +

Family Counseling

Battle Creek Counseling Associates
(269) 962-2722

Behavioral Health Resources
(269) 966-2866/ (269) 979-8333 +

Meijer Clinics
(269) 979-8119
Toll Free (888) 7CLINIC (725-4642)

Oaklawn Hospital Psychological Services
(269) 781-9119 * * * *

Oakridge Counseling Center +
(269) 963-7135

Psychological Consultants
(269) 968-2811 +
Toll Free: (800) 261-8850

Private Provider

Abuse/Neglect

Calhoun Child Abuse & Neglect Council
(269) 962-2562

Child Abuse & Neglect Hotline
(800) 4-A-Child

Child Protective Services (24 Hours)
(269) 966-1331

Parent Helpline
(800) 942-4357
Information and Referral

S.A.F.E. Place (Domestic Violence)
24-Hour Confidential Crisis Line
(269) 965-SAFE (7233)
or 1-888-664-9832

Sexual Assault Services
(269) 660-3925 (free)
Crisis Line: (888) 383-2192

Other Family Resources

Community Action Agency
(269) 965-7766/ (269) 441-1359
Fatherhood/Male Involvement

Kinship Support Services
(269) 660-0448

Parents, Families and Friends of Lesbians and Gays (PFLAG)
(269) 664-6892; (269) 375-1453;
(269) 349-4402

Substance Abuse Council
(269) 968-4699
Strengthening Families

Substance Abuse Prevention Services
(517) 629-2113 + + +
24 Hour Crisis Line: (517) 914-5921

The ARC
(269) 966-2575
Family Advocacy, Albion Parent Support Group

Urban League of Battle Creek
(269) 962-5553
Brother Dwelling in Unity

SUBSTANCE ABUSE

Youth with early history of experimentation with drugs are at greater risk for delinquent behavior. Drug-usage is also linked to academic and conduct problems and may involve associations with negatively influencing peers.

Support Groups

Alcoholics Anonymous, Alanon, Alateen: (269) 964-7577

Battle Creek Health System Smoking Cessation
(269) 966-8438

Narcotics Anonymous
(269) 969-8901

National Drug & Alcohol Treatment
(800) 662-HELP(4357)

Treatment

Kairos Health Care
(989) 777-4357 +
Long Term/Short Term, Residential

SPGB Services: (269) 964-3830 +
Psychological Consultants
(269) 968-2811 +

Prevention

SPGB Services: (269) 964-3830 +
Substance Abuse Council
(269) 968-4699

Substance Abuse Prevention Services
(517) 629-2113 + + +
24 Hour Crisis Line: (517) 914-5921

Screening and Referral

Kalamazoo Access Center
(888) 373-6200

Psychological Consultants
(269) 968-2811 +

SPGB Services: (269) 964-3830 +
Recovery
Celebrate Recovery Task Force of the Substance Abuse Council
(269) 968-4699

LEGAL SERVICES

Youth with extensive legal histories who began involvement with the law at an early age are more likely to re-offend and have additional behavioral problems in the future.

Police Emergency: 911

Legal Services of South Central Michigan
(269) 965-3951; (Toll Free) 1-800-688-3951
Michigan Dept. of State Police: (269) 968-6115

Juvenile Diversion

The Advocates : (269) 968-0624

Calhoun County Justice Complex

Circuit Court, Family Division: (269) 969-6732

Family Court: (269) 969-6775
Juvenile Probation Services

Friend of the Court: (269) 969-6415
(24 hour computerized case info access line)
(269) 969-6500 - Information Services Unit

Office of the Prosecuting Attorney: (269) 969-6980

MENTAL HEALTH

Youth in the criminal justice system have often experienced or witnessed some form of emotional, physical, or sexual abuse creating emotional and behavioral consequences. This may lead to further victimization and self-destructive behaviors.

Battle Creek Counseling Associates
(269) 962-2722
Individual Counseling, Sex Offender Group, Testing & Assessment

Behavioral Health Resources
(269) 966-2866/ (269) 979-8333 +
Individual Therapy, Group Therapy, Psychiatric Services, Testing & Assessment

CitiLink Ministries
(269) 969-9181
Affordable Faith-Based Counseling

Counseling Innovations
Kalamazoo: (269) 381-5476 +
Counseling for Lesbian/Gay/Bisexual/Transgender, Difficult Medical Diagnosis, Eating Disorder, Grief and Loss

Family & Children Services +
(269) 965-3247 + +
The Counseling Center

Family Health Center
(269) 965-8866 +
Behavioral Health Counseling

Forest View Hospital * * *
Grand Rapids: (800) 949-8439
Assessment, Inpatient, Partial Hospitalization

Oaklawn Hospital: Psychological Services * * * *
(269) 781-9119

Oakridge Counseling Center
(269) 963-7135 +
Individual Therapy, Eating Disorders, Play Therapy, Testing and Assessment

Pine Rest Christian Mental Health Services
1-800-678-5500
Inpatient, Outpatient, Partial Residential, Residential, Substance Abuse (Fee for assessment)

Planned Parenthood of South Central Michigan
(269) 964-0885
Toll Free: (800) 559-9093
Pregnancy Counseling +

Psychological Consultants
(269) 968-2811
Toll Free: (800) 261-8850
Outpatient, Attention Deficit Clinic, Evaluation +

S.A.F.E. Place (Domestic Violence)
24-Hour Confidential
Crisis Line: (269) 965-SAFE (7233)
or 1-888-664-9832
Children's Program

Sexual Assault Services
(269) 660-3925 (free)
Crisis Line: (888) 383-2192

Summit Pointe
(269) 966-1460 +
Crisis Hotline: 1-800-632-5449
Individual and Family Counseling, Psychological Services

Wraparound Services

(269) 441-5904 +

Crisis Services
Battle Creek Health System
Emergency Room

Oaklawn Hospital (Marshall)
Emergency Room

Private Provider

+ Accepts Medicaid.
+ + Requires referral through local Community Mental Health (Summit Pointe) for Intensive Services.
+ + + Substance Abuse Prevention Services formerly known as Minority Program Services.
* Oakridge Counseling Center accepts commercial insurance.
** PFLAG meetings are every 4th Sunday from 2:00 - 4:00 at People's Church in Kalamazoo.
*** Forest View requires referral through local Community Mental Health (Summit Pointe) to access Medicaid. No fee for assessment or referral.
**** Oaklawn Hospital provides only outpatient services for youth. Medicaid accepted only for psychiatric services and cannot be HMO Medicaid.
> Additional information is available by calling 211, an information and referral line for health/human services.

YOUTH SERVICES

Use of Free Time/ Community and Peers

A weak bond with family increases the influence of peers. Spending a lot of time with negatively influencing peers increases risk of delinquency. Involvement in organized activities allows youth the opportunity to form pro-social relationships and gives them less time to engage in delinquent behavior.

Attitudes and Skills

An adolescent's understanding of the impact his/her delinquent behavior has on others and motivation to change are critical in altering destructive behavior. In order to function positively in society he/she must also learn how to monitor and regulate behavior which includes focusing attention, controlling impulses and problem-solving.

School/ Education

Youth with poor performance at school are at greater risk for delinquency. Intervention programs aimed at improving academic performance have shown to decrease delinquency.

Employment

Battle Creek Public School Systems (269) 965-9514
WIA Youth Program

Connections: (269) 966-1460 *
On-Site Job Training, Dependable Workforce, Support Services, Consulting Services

Job Corps: (800) 733-JOBS
Career Training (Ages 16-24)

Michigan Rehabilitation Services (269) 968-3311 **

Libraries

Albion Public Library: (517) 629-3993

Athens Community Library: (269) 729-4479

Homer Public Library: (517) 568-3450

Marshall District Library: (269) 781-7821

Tekonsha Township Library: (517) 767-4769

Willard Library (Battle Creek): (269) 968-8166

After School/Gap Programs

21st Century Community Learning Center
(269) 965-3883

Blast Program: (517) 767-4123
(K-12: Union City, Tekonsha, Homer)

Boys & Girls Club: (269) 788-9930

Kids at Hope Youth Development Center
(517) 629-7179

Washington Heights: (269) 968-8773

Volunteer Service

Albion Volunteer Service Organization
(517) 629-5574

The Arc: (269) 966-2575
Volunteer Job Skills Training

Urban League of Battle Creek: (269) 962-5553
Future Force (Volunteer Job Skills Training)

Volunteer Center of Battle Creek: (269) 966-4189

Miscellaneous Activities

Boys and Girls Club of Battle Creek: (269) 788-9930

Boy Scouts of America
(269) 343-4687 or 1(800) 272-7962

Community Action: (269) 965-7766
After School Study and Recreation

Community Unlimited: (517) 741-4656
(Union City Schools)

Expand Program
Athens: (269) 729-5685

Family & Children Services: (269) 965-3247
Out & About

Girl Scouts Heart of Michigan: (800) 788-4919

Substance Abuse Prevention Services
(517) 629-2113 * * * *

24 Hour Crisis Intervention: (517) 914-5921
Positive Youth Development, Leadership

MSU Extension 4-H: (269) 781-0784
(\$10 per year to be a member; Ages 5-19)

Planned Parenthood of South Central Michigan
(269) 964-0885; Toll Free (800) 559-9093
Project TRUST, Peer Education

Urban League of Battle Creek: (269) 962-5553
Sojourner Truth Girls Academy, Future Force

Washington Heights Community Ministry
(269) 968-8773

Recreation

Albion Recreation Dept.: (517) 629-7179

Battle Creek Family YMCA: (269) 963-9622

Boys & Girls Club: (269) 788-9930

Community Integrated Recreation: (269) 968-8249

New Level Sports: (269) 964-9711 x 24

Recreation Departments
Battle Creek: (269) 966-3431

Albion: (517) 629-7179

Marshall: (269) 781-5166

Rosario's Boxing Academy: (269) 968-7371

Wattles Park Men's Club: (269) 979-4336
Year round athletic programs

Gang Intervention

The Advocates: (269) 968-0624

Urban League of Battle Creek: (269) 962-5553
Youth Leadership Camp

Women of Worth: (269) 579-1974
Healthy Relationships, Conflict Resolution, Employability Skills

Young Men in the Making: (269) 317-3305

Mentoring

Big Brothers Big Sisters: (269) 964-7117

Boys and Girls Club of Battle Creek: (269) 788-9930

Substance Abuse Prevention Services: (517) 629-2113 * * * *
24 Hour Crisis Intervention: (517) 914-5921

Character Education

Michigan Youth Challenge Academy: 1-800-372-0523 + +

Urban League of Battle Creek: (269) 962-5553
Future Force, Sojourner Truth Girls Academy, Restoration

Young Marines: (269) 998-8834 * * *
Leadership and Life Skill Development

Miscellaneous

Boys and Girls Club: (269) 788-9930

Family & Children Services: (269) 965-3247
Pregnancy Counseling, Parent Infant Program (parent or child with mental illness), Teen Parent Program, Community Living Support & Training

Substance Abuse Prevention Services
(517) 629-2113 * * * *

24 Hour Crisis Intervention: (517) 914-5921
Life Skills Development, Leadership, Violence Prevention

Summit Pointe: (269) 966-1460
Building Family Bridges

Women of Worth: (269) 579-1974
Healthy Relationships, Conflict Resolution, Employability Skills, Reproductive Health

Calhoun Intermediate School District +
(269) 781-5141

Alternative Education
Abundant Grace Covenant Church
Student Recovery (Novanet): (269) 966-4008

Calhoun Area Career Center
(269) 968-2271

Calhoun Community High School
(269) 565-4782

Marshall Alternative
(269) 781-1282

Michigan Youth Challenge Academy:
(800) 372-0523 + +

Night School - Battle Creek Public School District
Student Recovery (Novanet): (269) 660-5812

Operation Grad
(269) 964-2410 + + +

Pregnant/ Parenting Teen Program
(269) 968-2271 x 229

South Hill Academy (middle and high school)
(269) 965-9671

Urbandale Elementary
(269) 965-9735

Scholarship Programs

Battle Creek Community Foundation
(269) 962-2181
Legacy Scholars, GEAR UP++++, other scholarships

Battle Creek Public Schools
(269) 965-9470
Carson Scholars Fund (grades 4-11)++++

Lakeview Schools Educational Foundation
(269) 565-2411

Urban League of Battle Creek
(269) 962-5553
Future Force, Sojourner Truth Girls Academy

Winship Scholarship Foundation
(269) 966-6340

School Liaison Services

Summit Pointe
(269) 966-1460

* Only for customers of Summit Pointe.

** For individuals with a disability and a barrier to employment. Only for seniors in high school.

*** For youth 8-18. Fee for program and uniform. Not for youth with felonies or CSC, other charges considered on case by case basis.

**** Substance Abuse Prevention Services formerly known as Minority Program Services.

+ Special Education inquiries should be made through resident school district first.

+ + Applicants must be voluntary and between the ages of 16 and 19. Program intended for youth who are at risk of dropping out of school.

+ + + For students grades 9-12 who have dropped out.

++++ Only for students attending Battle Creek Public School Systems

+ Additional information is available by calling 211, an information and referral line for health/ human services.