



**Information and Referral Trees to access the following services in Calhoun County:**

- ◆ Dental Care
- ◆ Domestic Violence & Sexual Assault
- ◆ Emergency Assistance
- ◆ Financial Services
- ◆ Health Care for the Uninsured
- ◆ Housing Assistance
- ◆ Literacy / Adult Education
- ◆ Medical Transportation
- ◆ Mental Health
- ◆ Prenatal / Obstetrics
- ◆ Public Benefits
- ◆ Senior Health Services
- ◆ Senior Housing
- ◆ Senior Services
- ◆ Substance Abuse
- ◆ Teen Pregnancy Resources
- ◆ Veterans Benefits
- ◆ Women's Health
- ◆ Youth Services

140 Michigan Avenue West

Battle Creek, MI 49017

Phone: (269) 441-5904

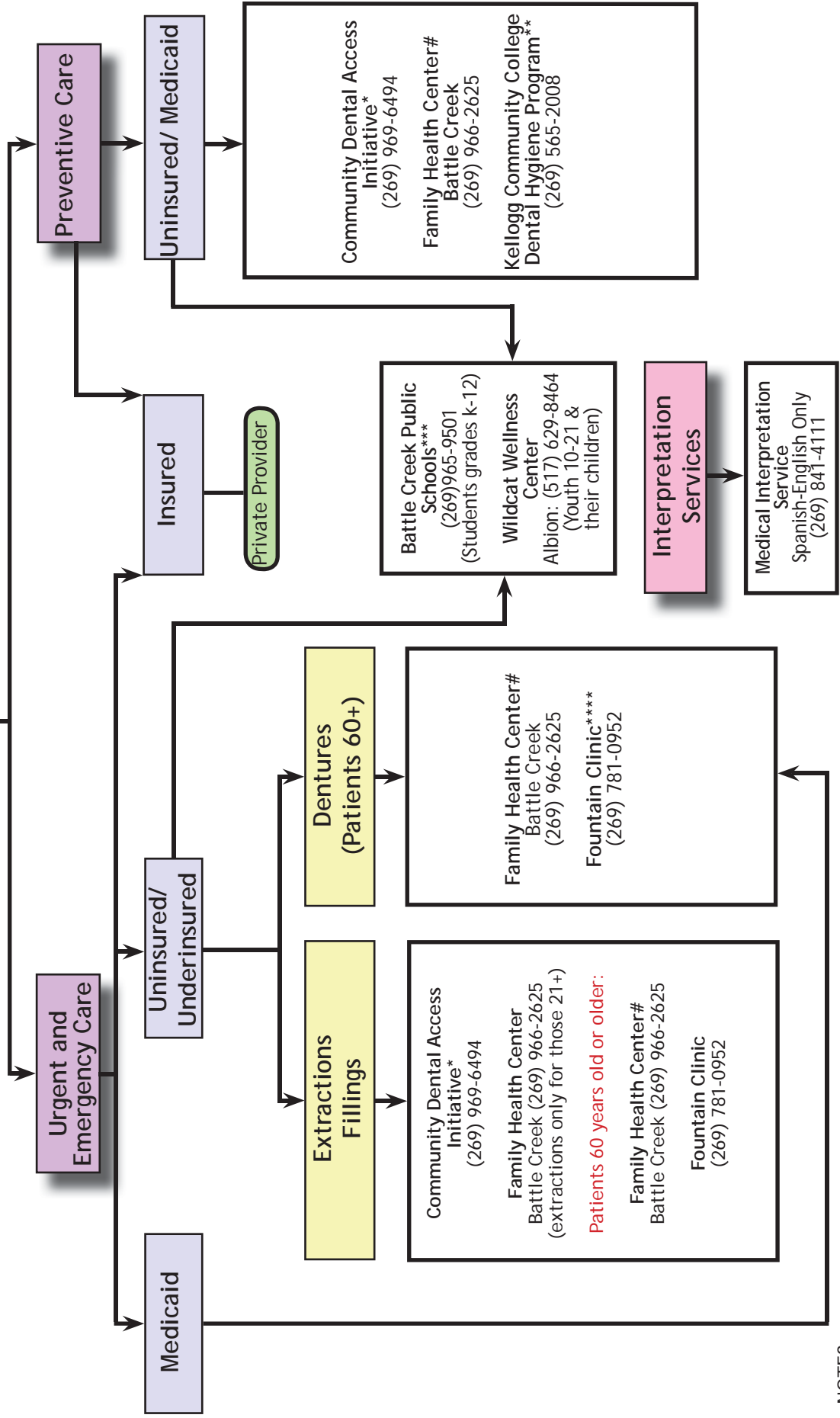
Fax: (269) 966-2844

Email: [akp@summitpointe.org](mailto:akp@summitpointe.org)

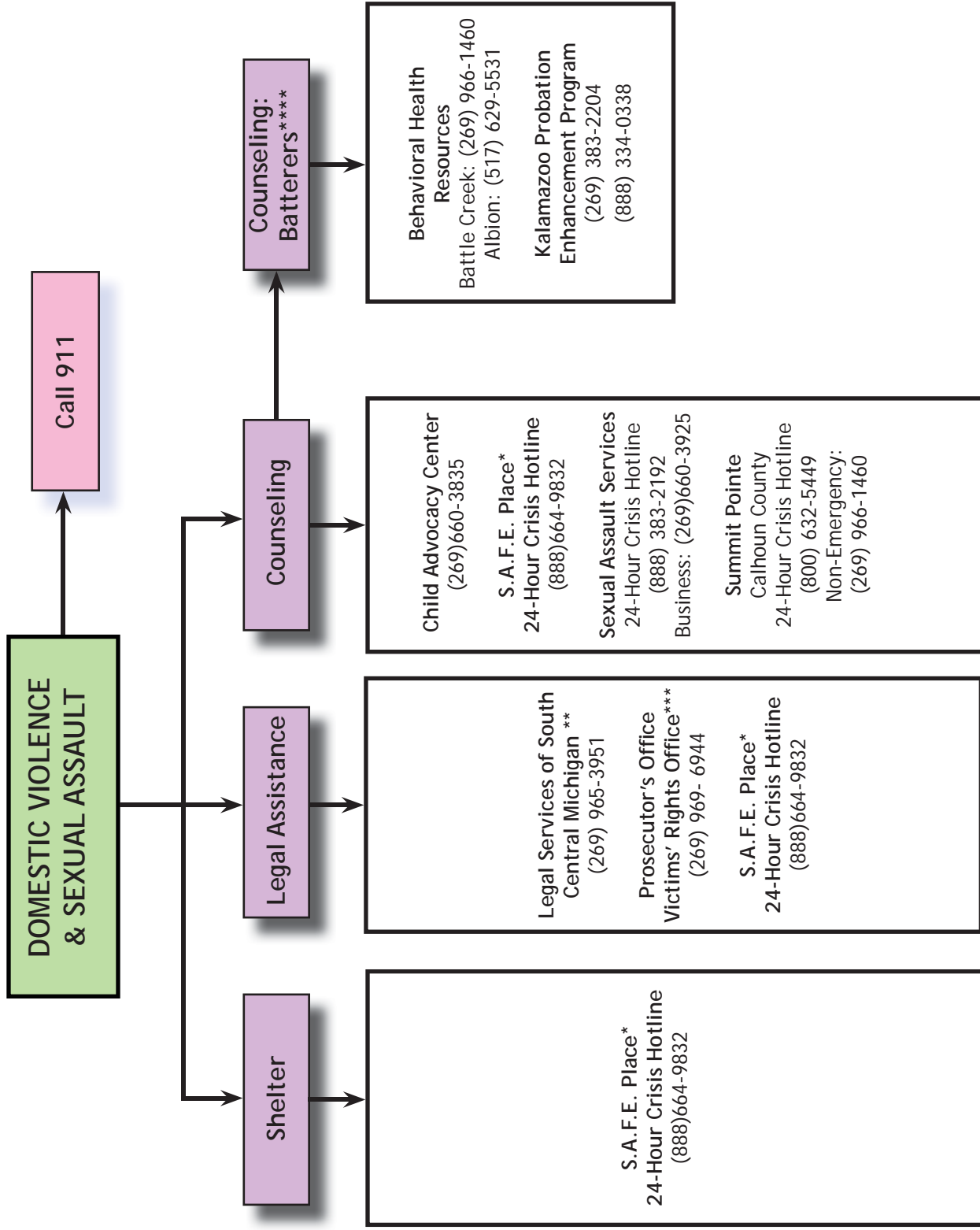
<http://www.tcccalhoun.org>

2010-11

# DENTAL CARE



NOTES:  
 \* All ages of Calhoun County residents are served, at or below 200% of the Federal Poverty Level.  
 \*\* The KCC Dental Hygiene Program is preventive only. This program accepts all individuals, regardless of income/ insurance status and accepts only cash.  
 \*\*\* Dental Services offered through Battle Creek Public Schools are for students of Battle Creek Public Schools who qualify for free or reduced lunch.  
 \*\*\*\* Fountain Clinic does not accept Medicaid or Medicare.  
 # Preventative Care is only available for those with Medicaid.



**NOTES:**

\* S.A.F.E. Place shelter services for victims of intimate partner violence and their children.

\*\* Legal Services clients must meet poverty criteria, does not handle criminal proceedings.

\*\*\* The Police Department makes a referral to the Victims Rights Office after a police report has been filed.

\*\*\*\*Behavioral Health Resources and Kalamazoo Probation Enhancement Program meet the Governor's standards for batterer intervention programming for males.

Call 211 or  
(269) 565-4159 (for cell phones)

**EMERGENCY ASSISTANCE**

**Electric/ Gas  
Bill Payment**

Albion Interfaith Ministries\* (517) 629-5260  
Community Action#\*\* Battle Creek: (269) 965-7766 x 293 Albion: (517) 629-9403 Emergency Services Contract  
Department of Human Services+ (269) 966-1284 State Emergency Relief  
The Salvation Army # (269) 966-4162 \*\*\*  
Marshall Area Community Services\*\*\*\*\* (269) 781-2954

**Rent Payment**

Albion Interfaith Ministries\* (517) 629-5260  
Community Action# Battle Creek: (269) 965-7766 x 293 Albion: (517) 629-9403  
Department of Human Services+ (269) 966-1284 State Emergency Relief  
The Salvation Army # (269) 966-4162  
SEE ALSO:  
HOUSING ASSISTANCE

**Clothing &  
Household Goods**

Albion Interfaith Ministries\* (517) 629-5260  
Charitable Union ++ (269) 964-7234

**Mortgage  
Payment**

Community Action# Battle Creek: (269) 965-7766 x 293 Albion: (517) 629-9403  
Department of Human Services + (269) 966-1284 State Emergency Relief  
The Salvation Army # (269) 966-4162  
SEE ALSO:  
HOUSING ASSISTANCE

**Food Assistance**

Albion Interfaith Ministries \* Albion: (517) 629-5260  
Department of Human Services (269) 966-1284  
Food Bank of South Central Michigan  
Call 211 for local food pantry  
The Salvation Army # \*\*\*\* (269) 966-4162 Emergency Food  
Community Action# Battle Creek: (269) 965-7766 Albion: (517) 629-9403  
Emergency Food Assistance Program, Commodity Supplemental Food Program  
**Over 60:**  
Battle Creek: (269) 965-7766  
Albion: (517) 629-9403  
Home Delivered Meals  
Congregate Meals

**NOTES:**

# Must be referred through 211.

\* AIM serves residents of Albion and Homer areas after all other agencies have denied services.

\*\* Must go through 211 and apply to DHS first.

\*\*\*Salvation Army must have shut off notice and client must demonstrate the ability to pay following month. **Must go through 211.** Limited to one time assistance per utility per year.

\*\*\*\*Salvation Army Emergency Food requires State ID for everyone over 18, and Social Security cards for entire household.

\*\*\*\*\*Only for Marshall residents and once per year, must have shutoff notice and have applied at DHS

+ State Emergency relief for bill payment has an annual maximum. Must have shut off notice or eviction notice to access services.

++ Must have a Bridge card, a Medicaid card or a referral to access services from the Charitable Union.

**FINANCIAL SERVICES**

Call 211 or  
(269) 565-4159 (for cell phones)

**Individual Financial Counseling**

GreenPath Debt Solutions \*  
(800) 550-1961  
Debt Management Program

Guardian Finance and Advocacy Services  
(269) 963-3253  
24 Hour Service  
(866) 963-3253

Neighborhoods Inc. of Battle Creek  
(269) 968-1113

**Financial Literacy**

Kellogg Community College \*  
(269) 965-4134

Neighborhoods Inc.  
(269) 968-1113

Home Ownership Lending Program  
Financial Fitness Education Program

**Taxes**

Community Action  
Battle Creek: (269) 965-7766x1340  
Albion: (517) 629-9403  
Volunteer Income Tax Assistance  
Earned Income Tax Credit

Community Unlimited  
(517) 741-4656

Private Provider

**Budgeting**

Guardian Finance & Advocacy Services  
(269) 963-3253  
24 Hour Service  
(866) 963-3253

Kellogg Community College \*  
(269) 965-4134

Neighborhoods Inc. of Battle Creek  
(269) 968-1113

**Representative Payeeeship;  
Conservatorship; Money Management**

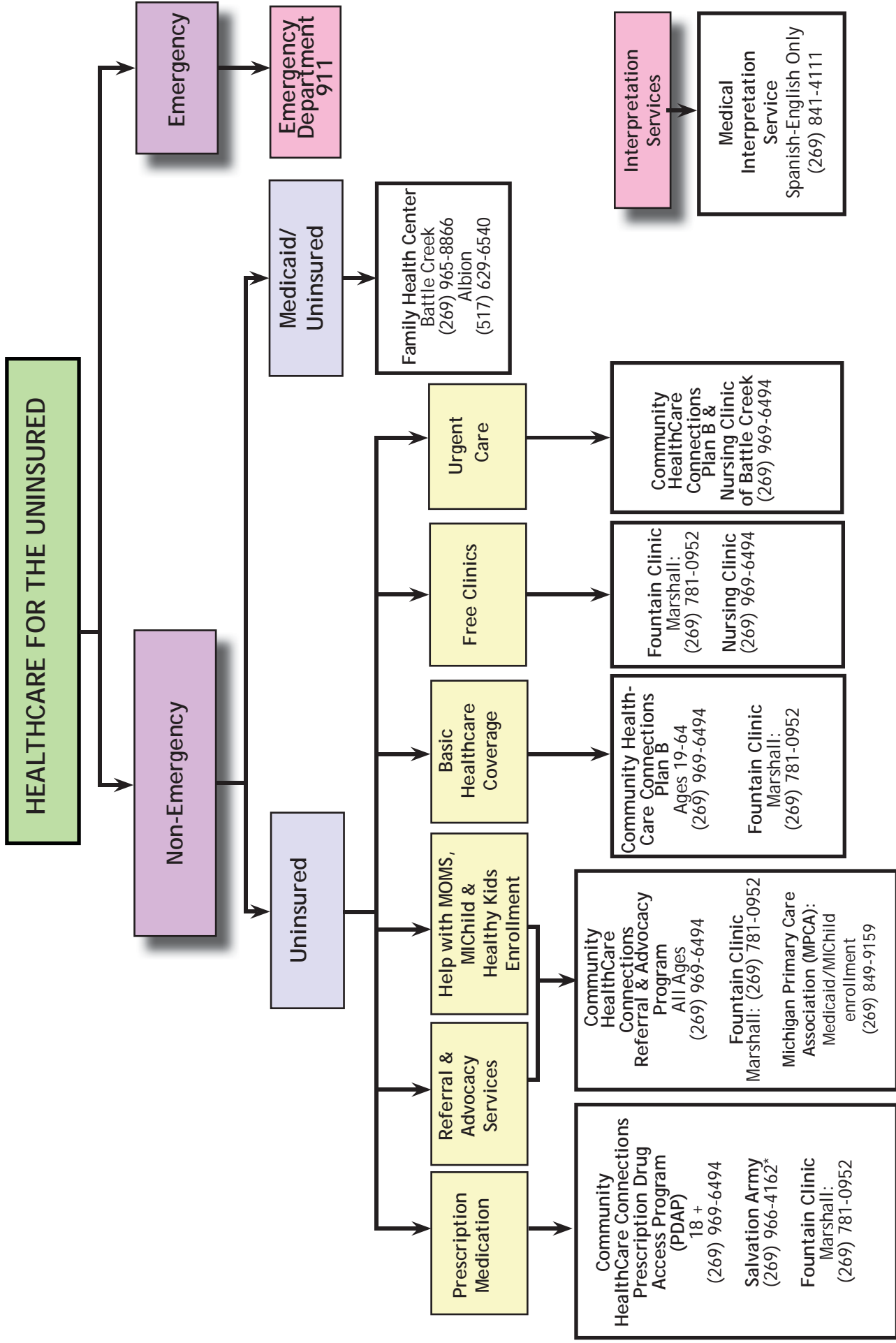
Guardian Finance and Advocacy Services  
(269) 963-3253  
24 Hour Service  
Toll free (866) 963-3253

**Credit Rebuilding**

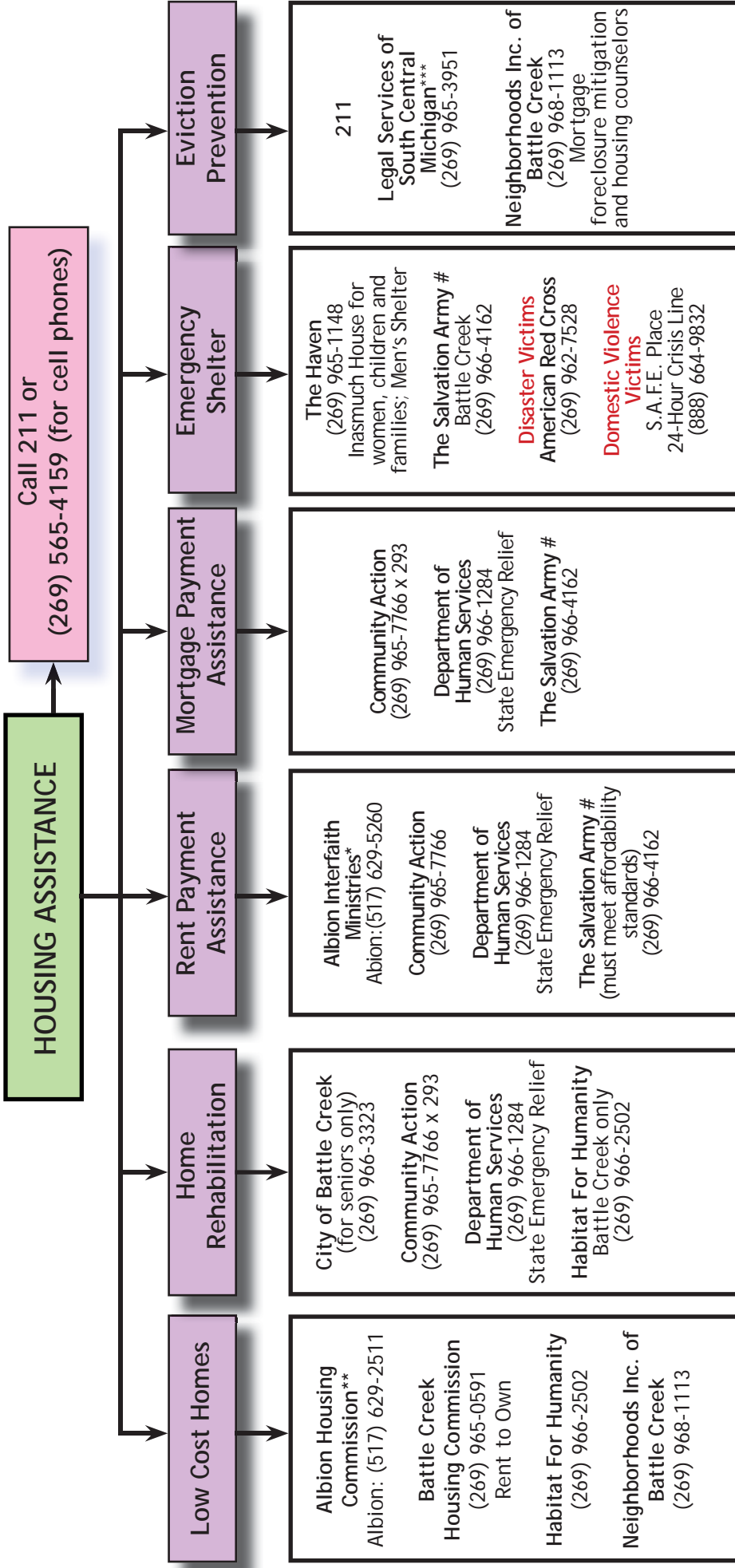
Guardian Finance and Advocacy Services  
(269) 963-3253  
24 Hour Service  
Toll free (866) 963-3253

Neighborhoods Inc. of Battle Creek  
(269) 968-1113

NOTES:  
\* Services offered for a fee.



NOTES:  
 \* Life sustaining medications only



**NOTES:**

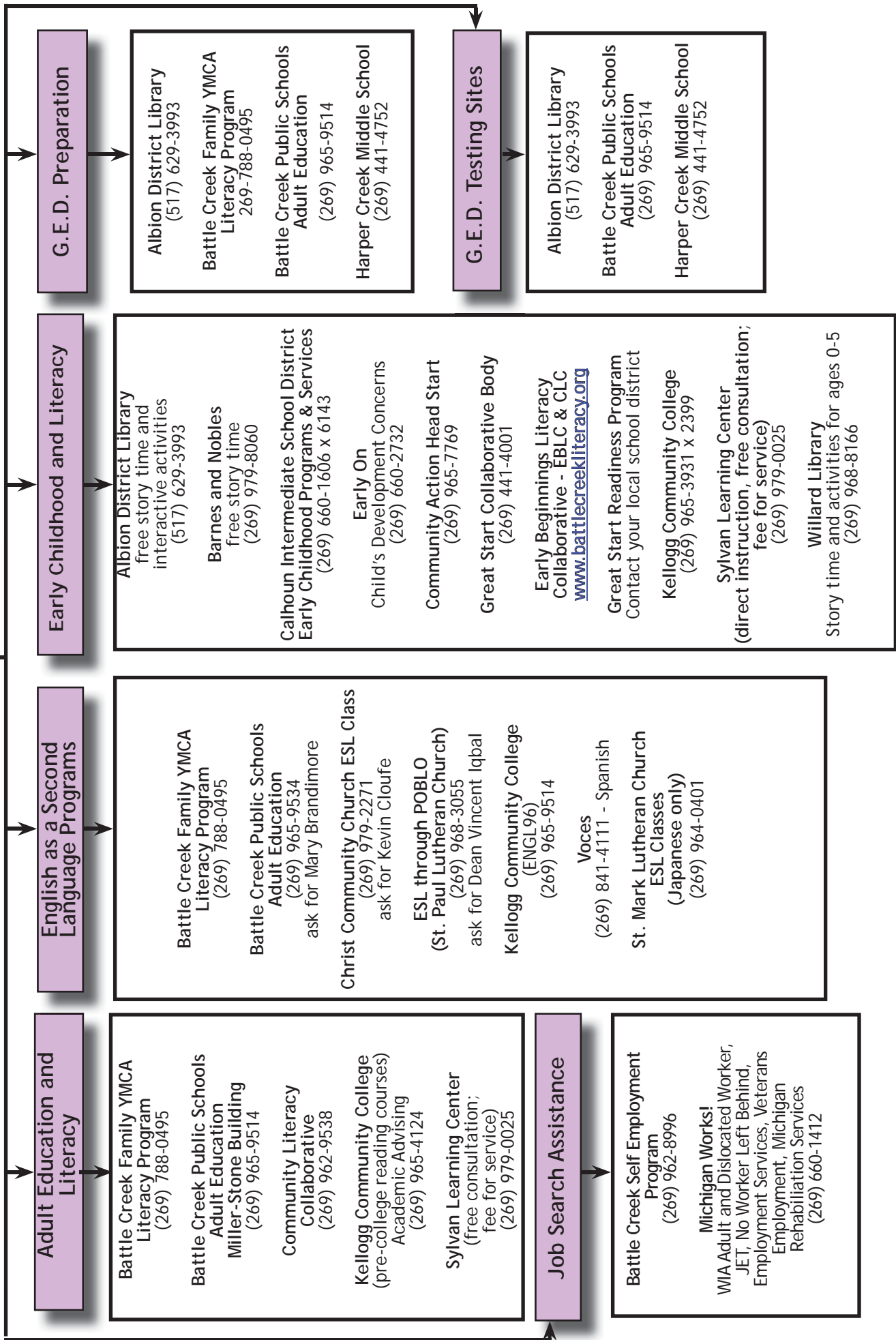
# Must be referred through 211

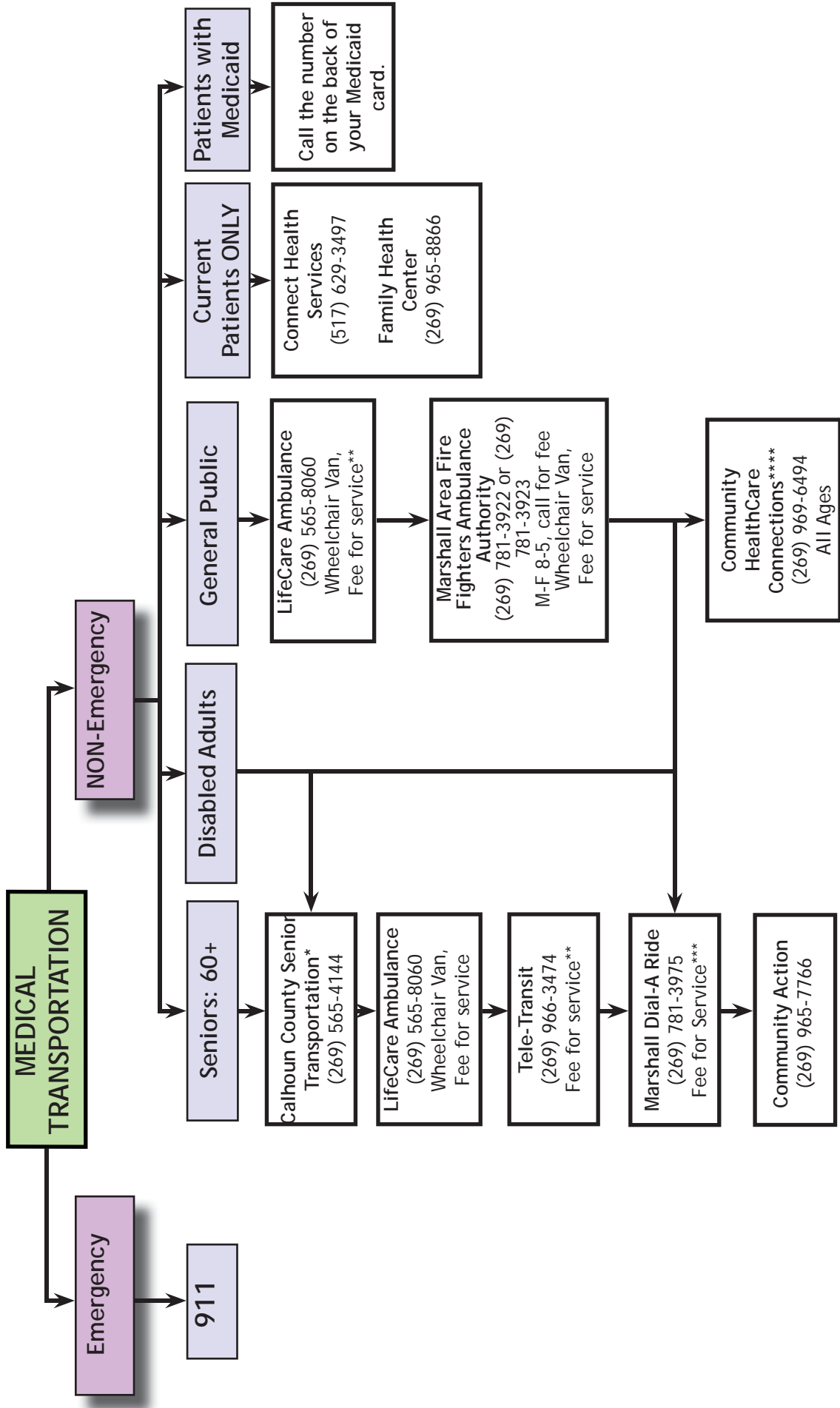
\* Services through Albion Interfaith Ministries (AIM) are available to residents of Albion and Homer areas when all other services are denied. Requires referral through 211.

\*\*Must have documentable income and no felonies on record.

\*\*\*Tax foreclosure cases must be referred through 211.

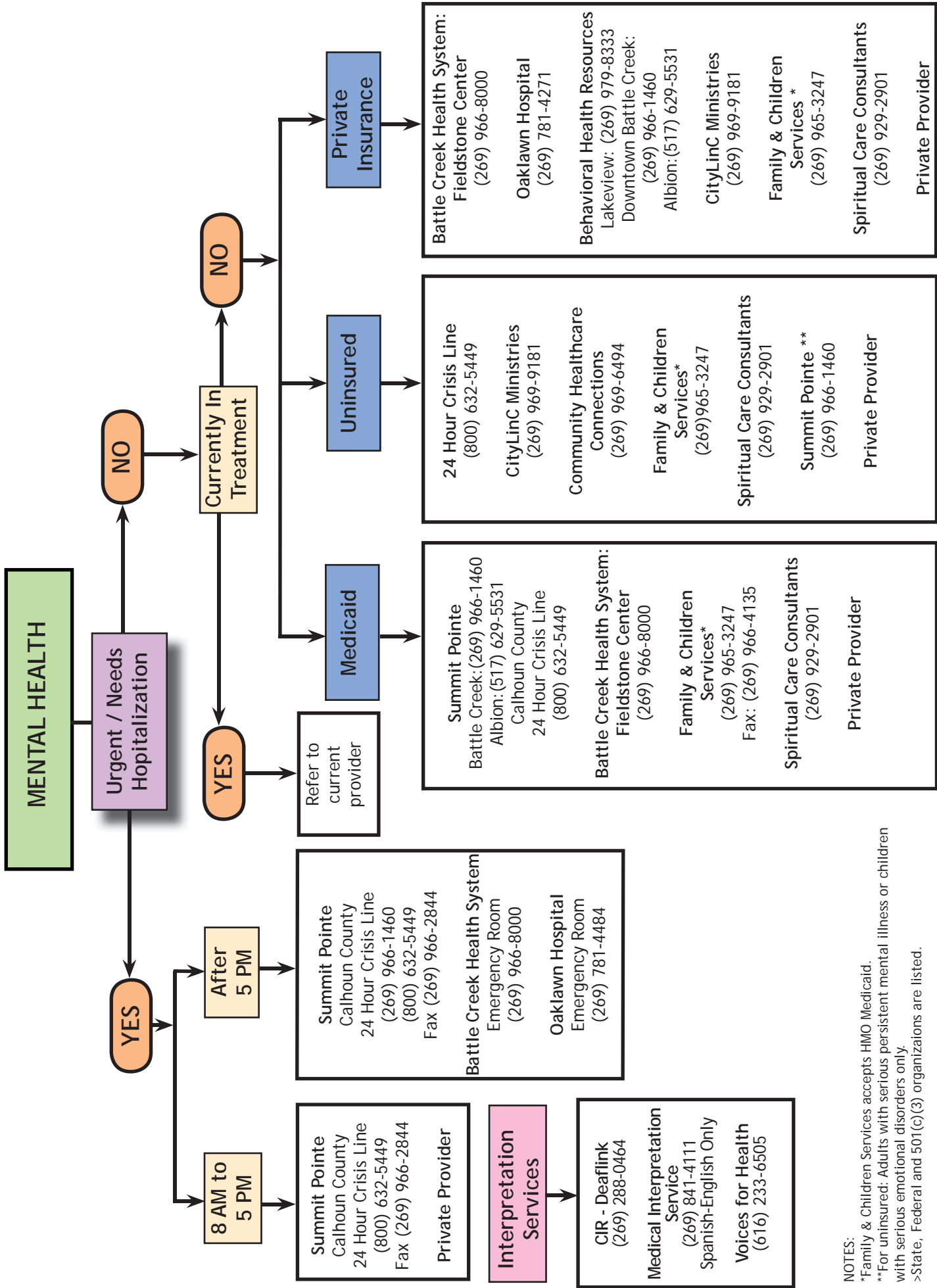
# LITERACY/ADULT EDUCATION





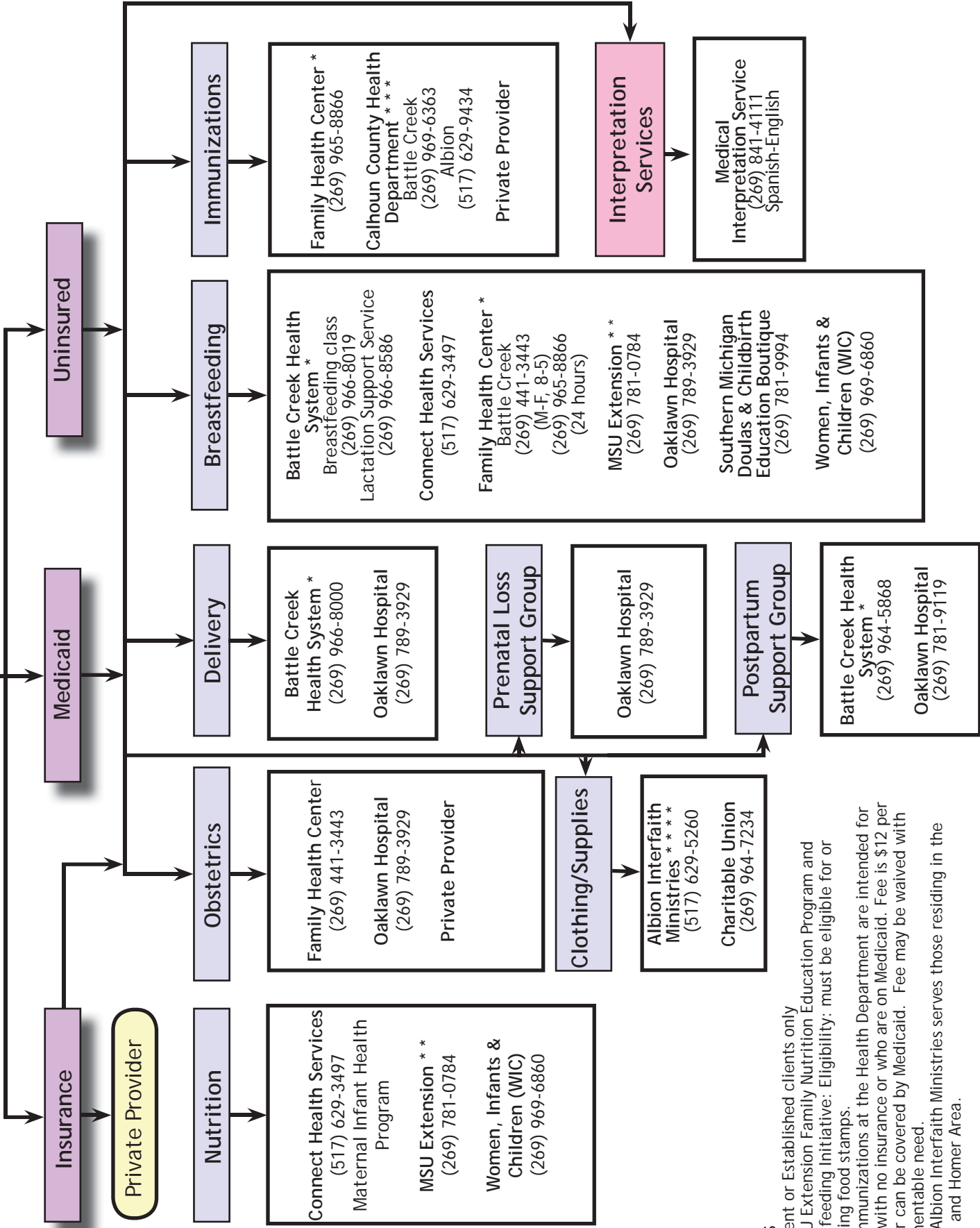
**NOTES:**

- \* Calhoun County Senior Transportation services are available for medical and non-medical transportation for Calhoun County residents traveling within Calhoun County
- \*\* Tele-Transit available for all transportation services on M-F, 5:15 AM to 11:30PM. FARES: \$7.00 each way; \$2 for elderly/disabled. Disabled must show transit I.D. or Medicare I.D. Card to receive \$2 fee. Passengers must be able to get themselves to the vehicle. Area Limitations: Kirby Road, B Drive North, Glenn Cross Road, St. Mary's Lake Road, 9 1/2 Mile Road.
- \*\*\* Marshall Dial-A-Ride is available Monday-Friday from 7 a.m. to 6 p.m. with last phone calls at 5:30 p.m. Advance scheduling is recommended. Exact change or tokens are required, call for rates.
- \*\*\*\*Community HealthCare Connections provides bus tickets or gas vouchers at a rate of \$0.18 per mile.



NOTES:  
 \*Family & Children Services accepts HMO Medicaid.  
 \*\*For uninsured: Adults with serious persistent mental illness or children with serious emotional disorders only.  
 >State, Federal and 501(c)(3) organizations are listed.

# PRENATAL / OBSTETRICS



NOTES  
 \* Current or Established clients only  
 \*\* MSU Extension Family Nutrition Education Program and Breastfeeding Initiative: Eligibility: must be eligible for or receiving food stamps.  
 \*\*\* Immunizations at the Health Department are intended for those with no insurance or who are on Medicaid. Fee is \$12 per shot or can be covered by Medicaid. Fee may be waived with documentable need.  
 \*\*\*\* Albion Interfaith Ministries serves those residing in the Albion and Homer Area.

**Call 211 or  
(269) 565-4159 (for cell phones)**

**PUBLIC BENEFITS**

**Emergency Assistance**

Charitable Union  
(269) 964-7234  
Clothing and Household Items

Community Action #  
Battle Creek  
(269) 965-7766 x 293  
Albion: (517) 629-9403  
Emergency Food &  
Shelter Program  
Emergency Services Contract

Department of Human  
Services  
(269) 966-1284  
State Emergency Relief

The Salvation Army #  
Battle Creek: (269) 966-4162

**Cash Assistance**

Department of Human  
Services  
(269) 966-1284  
**Disabled Adults**  
**General Public**  
State Disability Assistance  
Family Independence Program

Social Security Administration  
Local Number (269) 962-0910  
Toll-Free (800) 772-1213  
TTY (269) 962-0450  
Supplemental Security Income\*  
Social Security Disability  
Insurance \*\*

**Bill Payment**

Community Action #  
Battle Creek (269) 965-7766  
Albion (517) 629-9403

Department of Human Services  
(269) 966-1284  
State Emergency Relief, Energy  
Direct, Weatherization Assis-  
tance Program, Home Heating  
Credit, ChildCare Assistance

The Salvation Army #  
(269) 966-4162

**Food Assistance**

Albion Interfaith Ministries # \* \* \* \*  
Albion (517) 629-5260

Calhoun County Health Department +  
(269) 969-6363  
Women, Infants and Children (WIC)

Community Action  
Battle Creek (269) 965-7766x293  
Albion (517) 629-9403  
Emergency Food Assistance Program  
Commodity Supplemental  
Food Program +  
**Over 60**  
(269) 965-7766x293  
Home Delivered Meals  
Congregate Meals

Department of Human Services  
(269) 966-1284  
Food Assistance Program

Food Bank of South Central Michigan  
Call 211 for your local food pantry

The Haven \* \* \*  
(269) 965-1148

The Salvation Army #  
Battle Creek: (269) 966-4162  
Soup Kitchen, Emergency Food

**Health Care**

Calhoun County  
Health Department  
(269) 969-6363  
Children's Special Health Care  
Services Immunizations,  
Pregnancy Testing,  
STD/HIV Testing

Community HealthCare  
Connections & Nursing Clinic of  
Battle Creek  
(269) 969- 6494  
Dental Access Program  
Health Assistance Fund  
Plan B: For the working poor  
Prescription Drug Access Program  
Referral & Advocacy  
State Program Enrollment  
Free Clinic

Department of Human Services  
(269) 966-1284  
**Adults**  
Adult Medical Program  
Medicaid  
Medicare Saving Program  
MIChoice  
MI Child  
**Pregnant Women**  
Group 2 for Pregnant Women  
Healthy Kids for Pregnant Women  
Maternity Outpatient Medical  
Services

Department of Human  
Services continued  
(269) 966-1284  
**Over 65**  
Medicaid  
**Children**  
Medicaid  
Healthy Kids

Family Health Center  
Battle Creek  
(269) 965-8866

Fountain Clinic + +  
Marshall: (269) 781-0952

Michigan Primary Care  
Association (MIPCA)  
Medicaid/MiChild enrollment  
(269) 849-9159

Veterans Affairs  
Medical Center  
Toll Free  
(888) 214-1247

Salvation Army  
Prescription Assistance  
(269) 966-4162

Private Provider

**Legal Services**

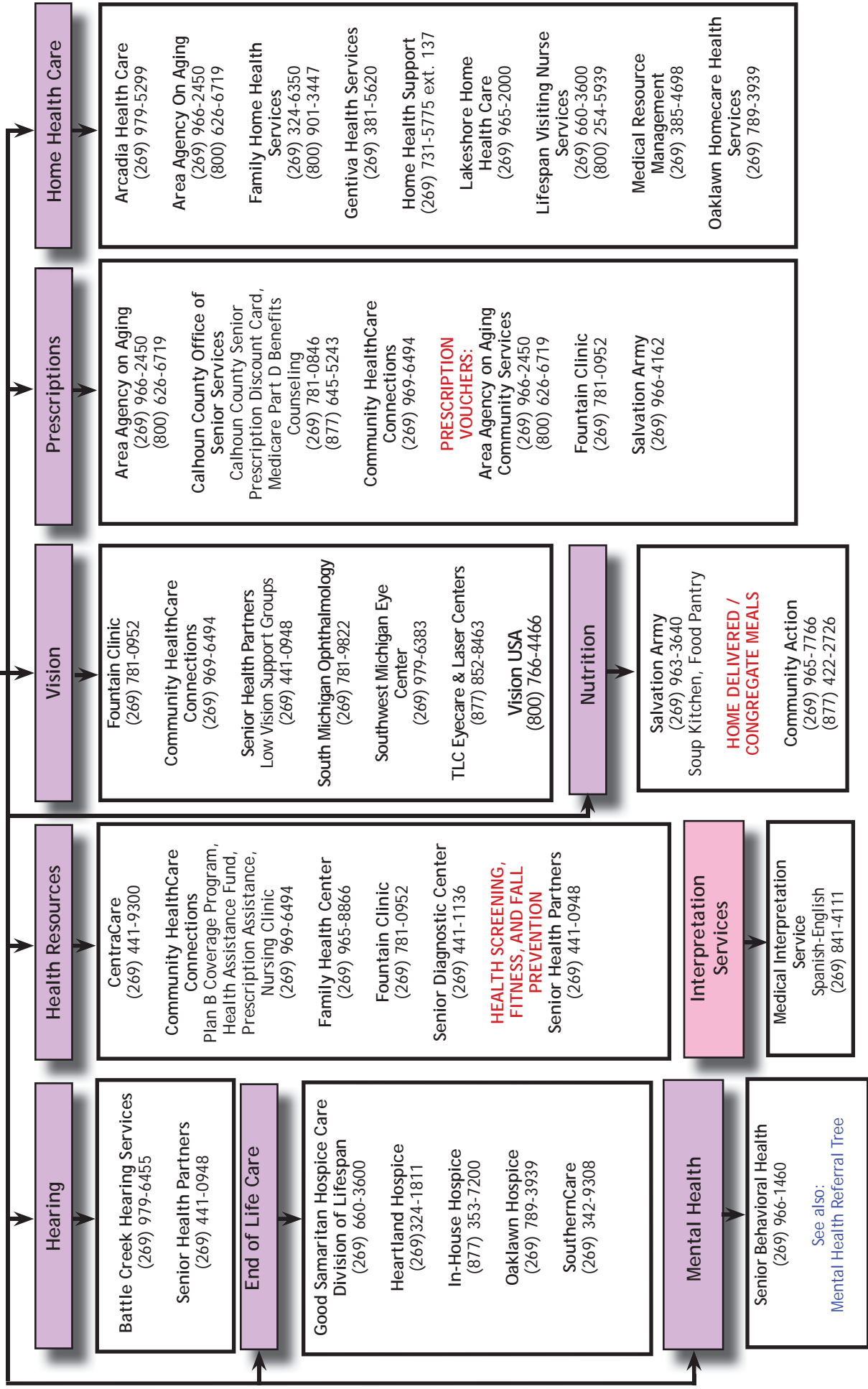
Legal Services of South  
Central Michigan+ +  
(269) 965-3951

Private Provider

NOTES:  
# Must be referred through 211  
\* SSI is for individuals who are over 65, blind or disabled with limited income, based on need.  
\* \* SSDI is based on how long you have worked and paid Social Security taxes, for individuals no longer able to work due to a disability.  
\* \* \* The Haven serves free meals for residents and non-residents during the week and on holidays and weekends when Salvation Army Soup Kitchen is Closed.  
\* \* \* \* Albion Interfaith Ministries serves residents of Albion and Homer area.  
+ For women who are pregnant, nursing or have children under 6 and are not covered by WIC. Must be income eligible. No fee.  
+ + Fountain Clinic is free for all residents of Calhoun County. Must meet income guidelines and have no form of insurance.

# SENIOR HEALTH SERVICES

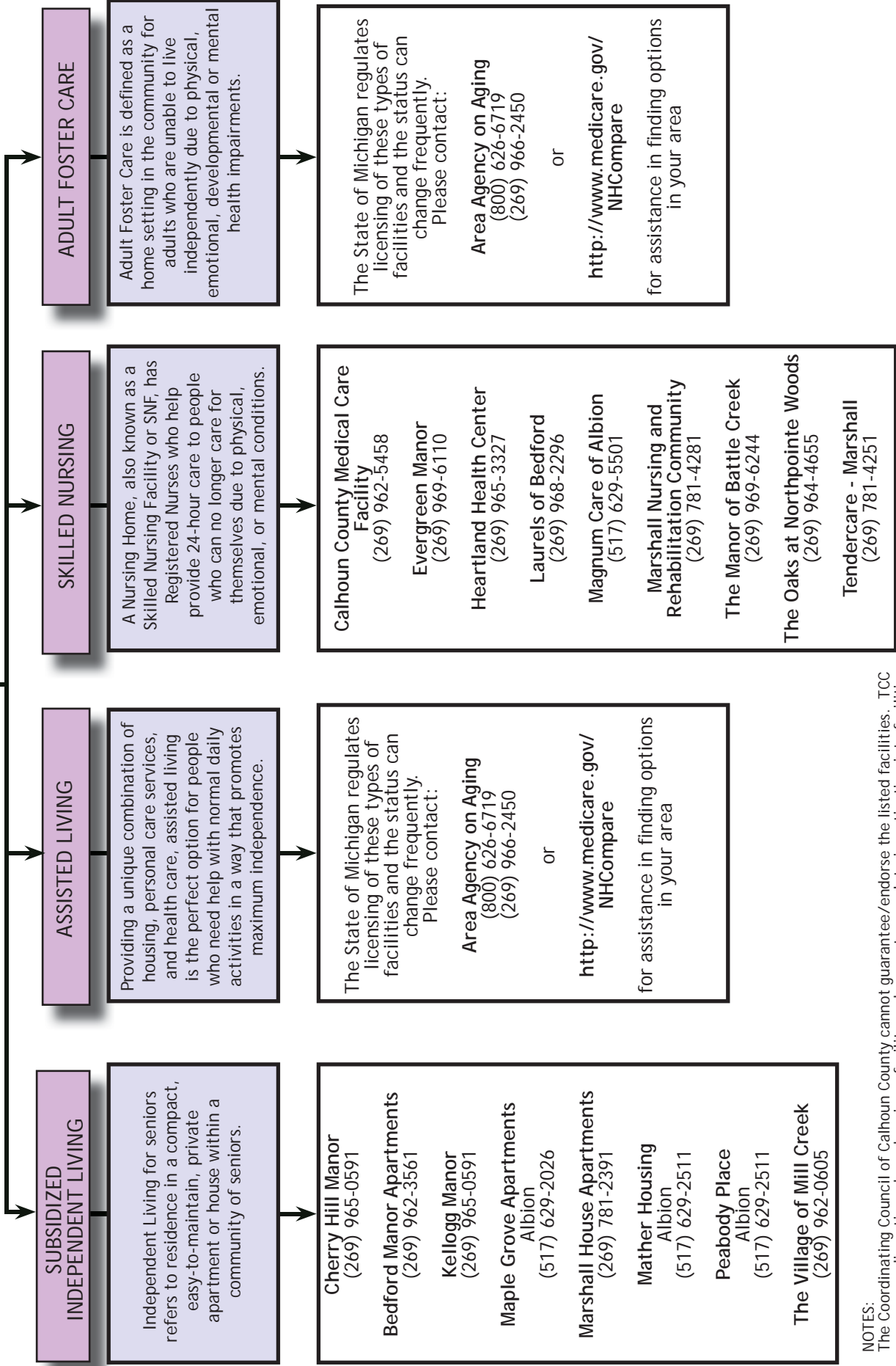
ADDITIONAL INFORMATION AND ASSISTANCE CAN BE FOUND BY CONTACTING YOUR LOCAL AREA AGENCY ON AGING AT 1-800-626-6719



NOTES  
 > Congregate Meals are offered at various sites in Calhoun County including Albion, Battle Creek, Homer and Marshall.  
 > Food Pantries are available with a referral from 211 or the Department of Human Services.

# SENIOR HOUSING

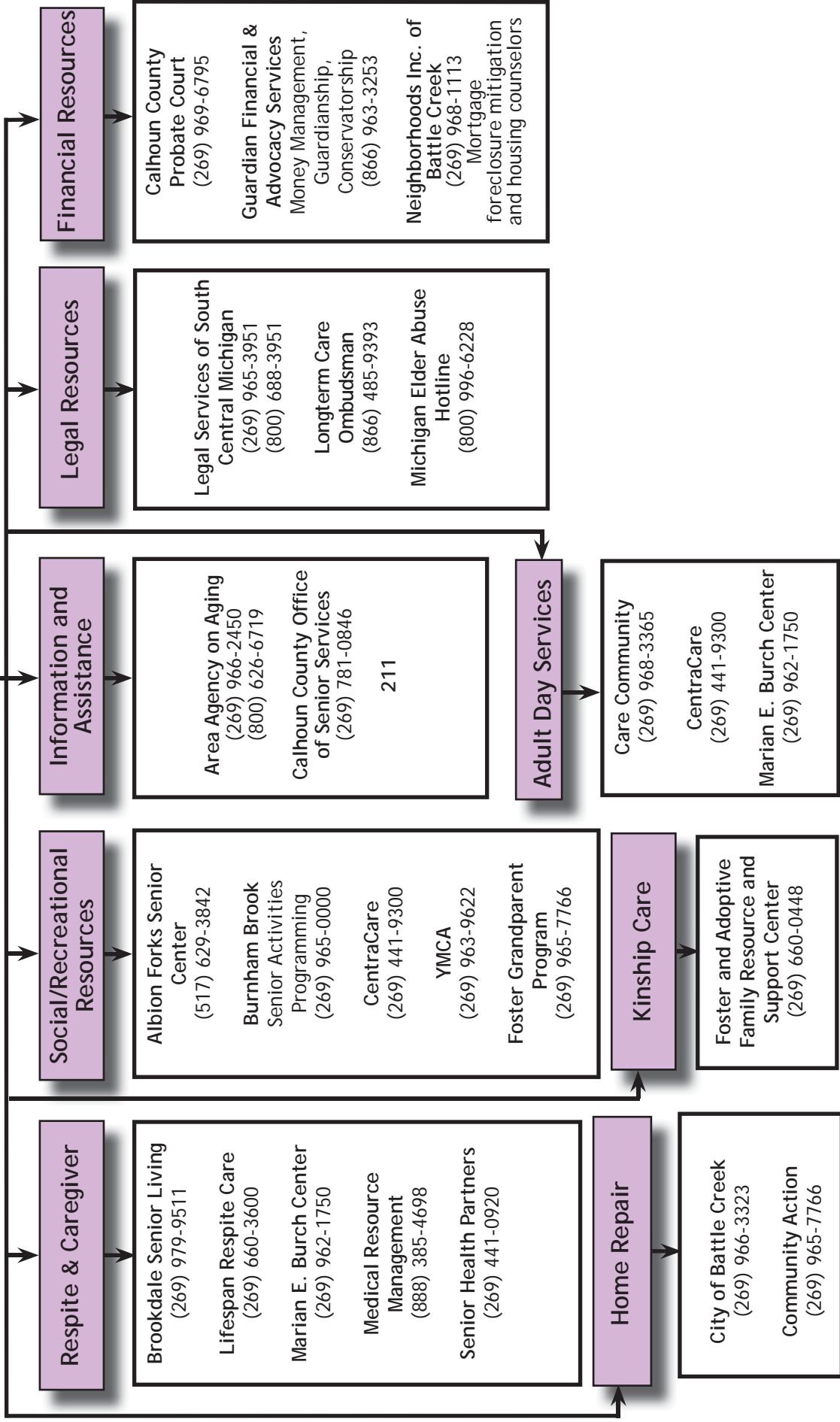
ADDITIONAL INFORMATION AND ASSISTANCE CAN BE FOUND BY CONTACTING YOUR LOCAL AREA AGENCY ON AGING AT 1-800-626-6719

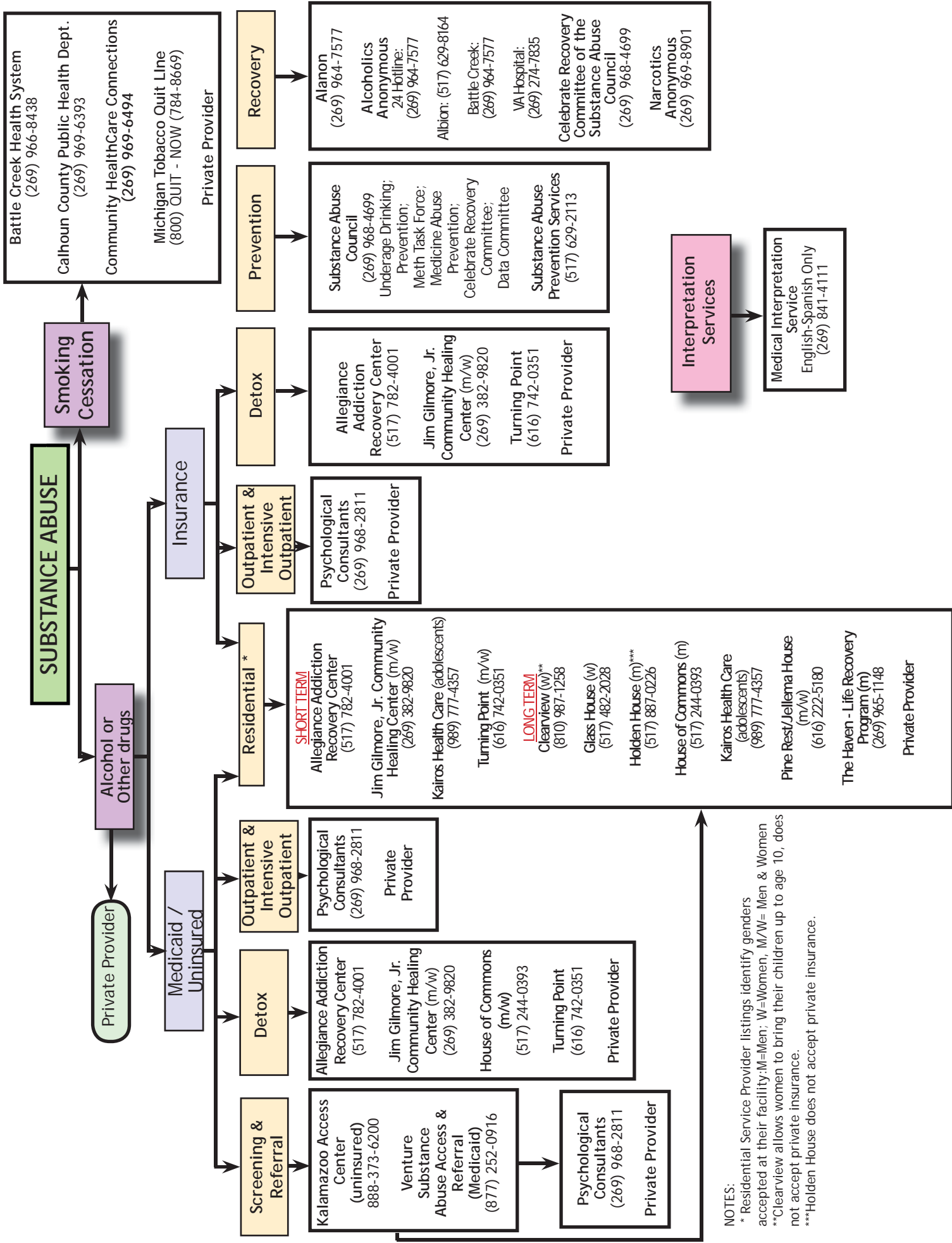


NOTES:  
The Coordinating Council of Calhoun County cannot guarantee/endorse the listed facilities. TCC encourages discretion when choosing a facility and suggests complete investigation into facilities and licensure prior to engaging services.

# SENIOR SERVICES

ADDITIONAL INFORMATION AND ASSISTANCE CAN BE FOUND BY CONTACTING YOUR LOCAL AREA AGENCY ON AGING AT 1-800-626-6719





**NOTES:**  
 \* Residential Service Provider listings identify genders accepted at their facility: M=Men; W=Women; M/W= Men & Women  
 \*\*Clearview allows women to bring their children up to age 10, does not accept private insurance.  
 \*\*\*Holden House does not accept private insurance.

Call 211 or  
(269) 565-4159 (for cell phones)

**TEEN PREGNANCY RESOURCES**

**Pregnancy Testing**

**CityLinC Ministries**  
(269) 969-9181 (free)

**Crisis Pregnancy Center**  
(269) 963-6206

**Family Health Center** \* \* \*  
(269) 965-8866

**Health Department** \*  
Battle Creek (269) 969-6363  
Albion (517) 629-9434  
(866) 303-9436

**Marshall Pregnancy Center**  
(269) 781-9994 (free)

**Planned Parenthood** \* \* \*  
Battle Creek (269) 964-0885

**Wildcat Wellness Center**  
(Ages 10-21) (517) 629-8464

**Prenatal Loss  
Support Group**

**Oaklawn Hospital**  
(269) 789-3929

**NOTES:**

- \* Pregnancy testing is \$10 or can be covered by Medicaid.
- \*\* Pregnancy tests are done for free - accept donations
- \*\*\* For established patients only.
- \*\*\*\* Fee for BCHS childbirth class is \$35.
- + \$40 for all classes offered or free if on Medicaid.
- + + Immunizations are for those with no insurance, insurance that does not cover immunizations, or who are on Medicaid.
- Fee is \$12 per shot or can be covered by Medicaid.
- + + + Accepts Michigan Medicaid. MIHP for Medicaid recipients. Private insurance accepted upon physician referral for skilled nursing services.
- + + + + Must be receiving or eligible for WIC and/or food stamps

**Pregnancy Prevention Resources**

**Prevention Education**

Kids at Hope (517) 629-2113

Substance Abuse Prevention Services (517) 629-2113

Planned Parenthood (269) 964-0885

Wildcat Wellness Center (517) 629-8464 Albion (Ages 10-21)

**Goals/Leadership/Decision Making/Family**

Battle Creek Family YMCA (269) 288-0023

Health Department (269) 969-6365

Planned Parenthood: (269) 964-0885

Substance Abuse Council (269) 968-4699

Summit Pointe (269) 966-1460

Teen Pregnancy Prevention Program (TP3) (269) 965-3247 x 732  
attn: Shelly

**Contraceptives**

Family Health Center \* \* \*  
(269) 965-8866

Health Department (condoms only)  
Battle Creek (269) 969-6363  
Albion (517) 629-9434

Planned Parenthood (269) 964-0885

**STD Testing**

Family Health Center \* \* \*  
(269) 965-8866

Health Department  
Battle Creek (269) 969-6363  
Albion (517) 629-9434

Planned Parenthood \* \* \*  
(269) 964-0885

Wildcat Wellness Center (517) 629-8464 (Ages 10-21)

Private Provider

**Resources For Pregnant Teens**

**Childbirth Education**

Battle Creek Health System (269) 966-8019

Oaklawn Hospital (269) 789-3929 +

Southern Michigan Doulas and Childbirth Education Boutique (269) 781-9994

MSU Extension (Education) + + + +  
(269) 781-0784

Women Infant Children (WIC) (269) 969-6860

**Breastfeeding Education**

Battle Creek Health System (free)  
(269) 966-8019

Connect Health Services (517) 629-3497

Family Health Center\*\*\*\*  
Battle Creek (269) 441-3443 (Business Hours)  
24 Hour and Weekend line (269) 965-8866

MSU Extension + + + + (269) 781-0784

Oaklawn Hospital+ (269) 789-3929

Southern Michigan Doulas and Childbirth Education Boutique (269) 781-9994

Women Infants & Children (WIC)  
(269) 969-6860

**Teen Parent Programs**

Alternative Education for Pregnant & Parenting Teens (269) 968-2271 x 5229

**Medicaid for Pregnant Women**

Community HealthCare Connections: MOMS Program (269) 969-6494

Department of Human Services  
(269) 966-1284

Michigan Primary Care Association  
(269) 849-9159

Women Infants & Children (WIC)  
(269) 969-6860

Family Health Center \* \* \* (269) 441-3443

**All Options Counseling**

Planned Parenthood (269) 964-0885

**Resources For Teen Parents**

**Alternative Education**

Alternative Education for Pregnant & Parenting Teens  
(269) 968-2271 x 5229

**Immunizations**

Family Health Center \* \* \*  
Battle Creek (269) 965-8866  
Albion (517) 629-6589

Health Department + +  
(269) 969-6363

Wildcat Wellness Center  
(Ages up to 21)  
(517) 629-8464

**Child Care**

Child Care Resources  
(269) 349-3296 or (800) 343-3470

**Insurance/Financial Resources**

Community HealthCare  
for ages 19-64 (269) 969-6494

Department of Human Services  
(296) 966-1284

Michigan Primary Care Association  
(269) 849-9159

**Resources for Infant Needs**

Albion Interfaith Ministries  
(517) 629-5260

Albion 1st United Methodist Church  
(517) 629-9425

Infant Safe Sleep Information  
(800) 331-7437

**Nutrition**

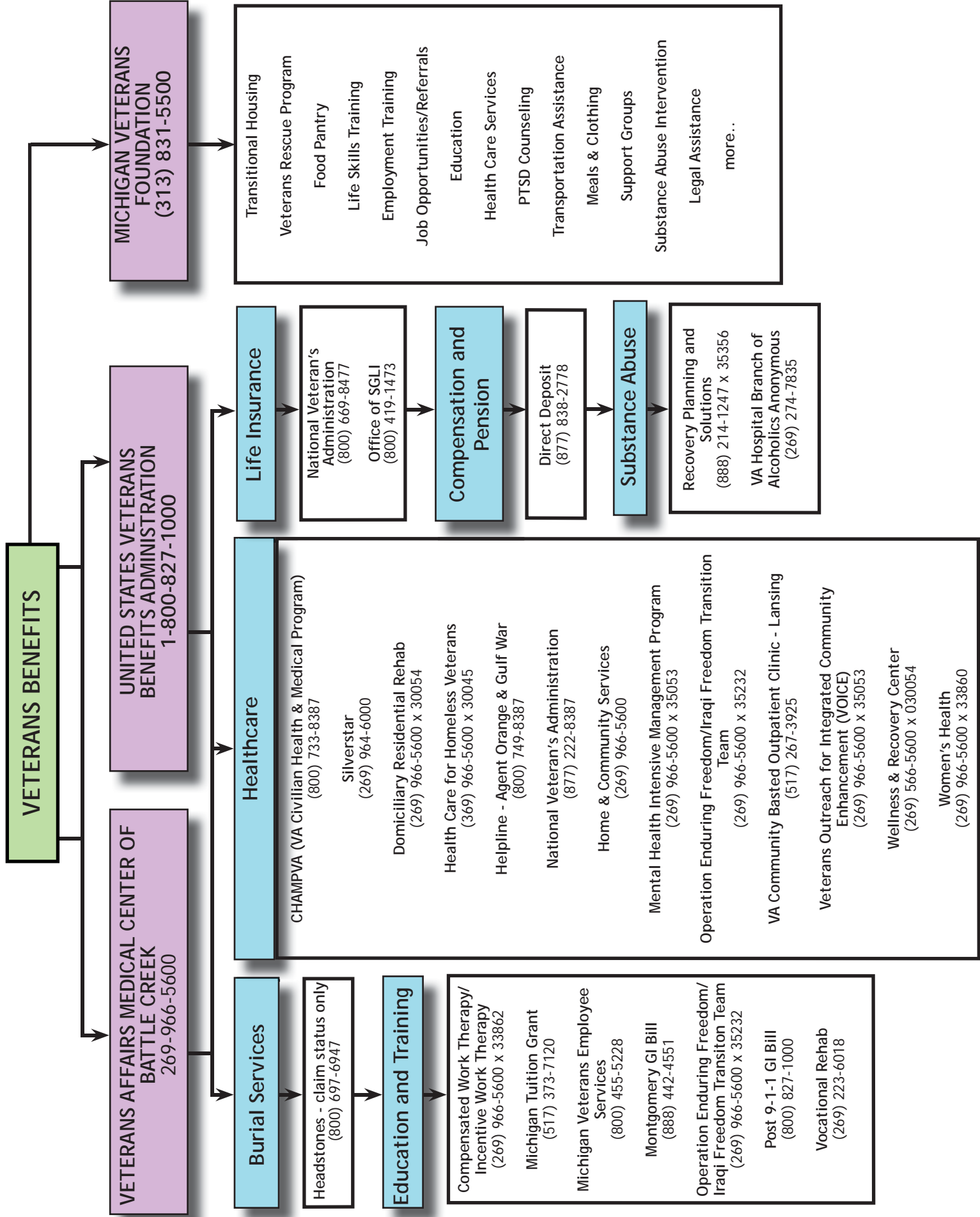
Connect Health Services  
(517) 629-3497

Women Infants & Children (WIC)  
(269) 969-6860

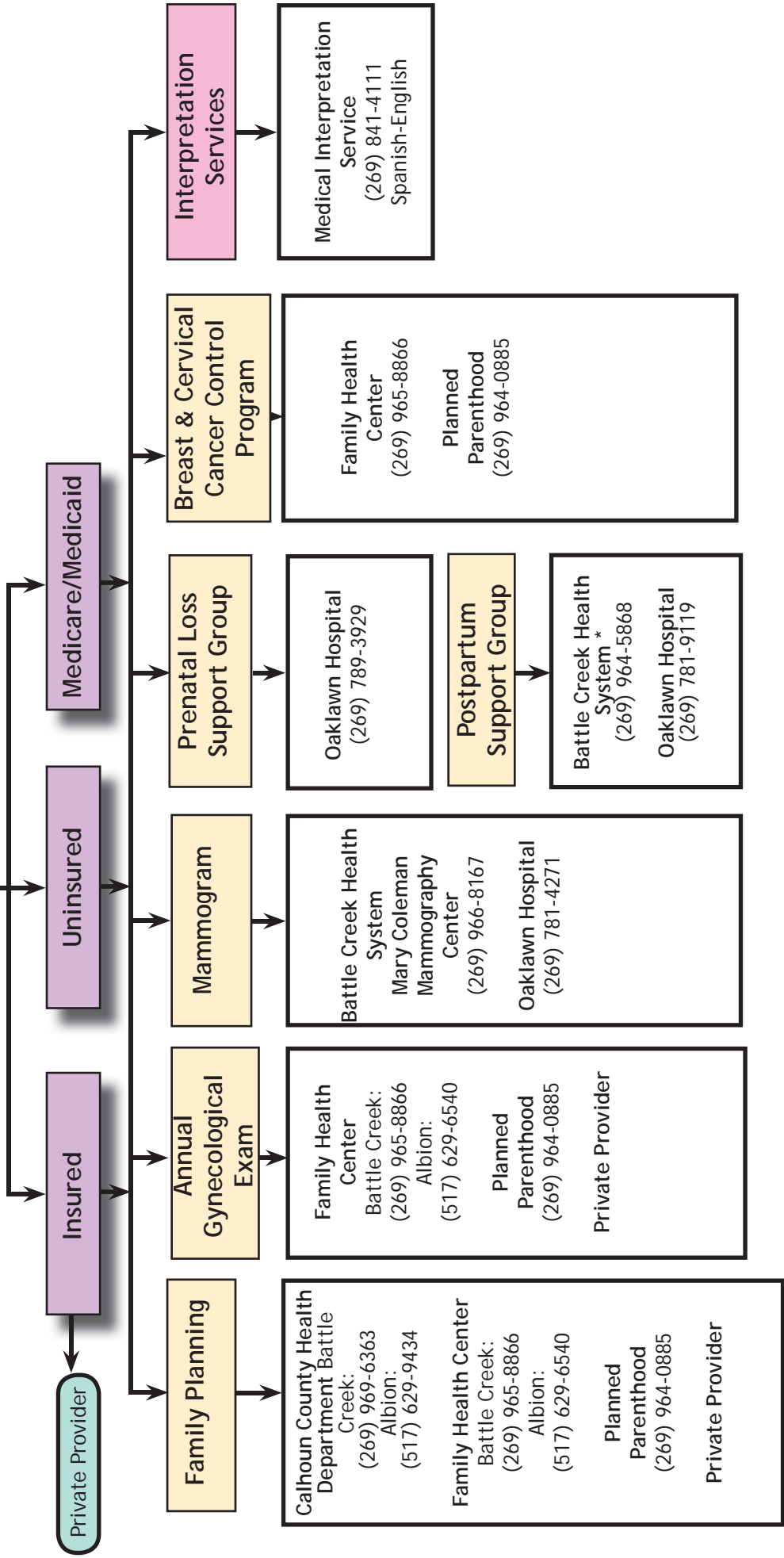
**Early Childhood Education**

Community Action Head Start  
(269) 965-7769

Calhoun Intermediate School District  
(269) 660-1606



**WOMEN'S HEALTH**



# YOUTH SERVICES

## FAMILY, INFORMATION AND SERVICES

|   |  |  |   |
|---|--|--|---|
| <p><b>Intensive Family Services</b><br/> <b>Family &amp; Children Services</b><br/>           (269) 965-3247</p> <p>Respite Services, Parenting Workshops, Case Management, Family and Community Treatment (Home-Based), Family Counseling</p> <p><b>Lutheran Social Services</b><br/>           (269) 964-6180</p> <p>Home-Based Services, Family Counseling, Families First (through DHS)</p> <p><b>Starr Commonwealth</b><br/>           Albion: (517) 629-5591<br/>           Battle Creek: (269) 968-9287<br/>           Toll Free: (800) 837-5591</p> <p>Residential, Sexually Reactive Youth Program, Day Treatment, Treatment Foster Care, Mental Health Counseling, Family Counseling</p> <p><b>Summit Pointe</b><br/>           (269) 966-1460</p> <p>Multi-Systemic Therapy: Individual, Family and Group Counseling</p> <p><b>Individual and Family Counseling</b><br/> <b>Aurora Andrews Psychiatry and Christian Counseling Center of Battle Creek</b><br/>           (269) 979-8119</p> <p><b>Battle Creek Counseling Associates</b><br/>           (269) 962-2722</p> <p>Individual Counseling, Sex Offender Group, Testing &amp; Assessment</p> <p><b>Behavioral Health Resources</b><br/>           (269) 979-8333</p> <p>Individual Therapy, Group Therapy, Psychiatric Services, Testing &amp; Assessment</p> | <p>Counseling Innovations<br/>           Kalamazoo: (269) 381-5476<br/>           Counseling for Lesbian/Gay/Bisexual/Transgender, Difficult Medical Diagnosis, Eating Disorder, Grief and Loss</p> <p><b>Family &amp; Children Services</b><br/>           (269) 965-3247</p> <p>The Counseling Center</p> <p><b>Family Health Center:</b><br/>           (269) 965-8866</p> <p>Behavioral Health Counseling</p> <p><b>Forest View Hospital</b><br/>           Grand Rapids: (800) 949-8439</p> <p>Assessment, Inpatient, Partial Hospitalization</p> <p><b>Oaklawn Hospital Psychological Services:</b> (269) 781-9119</p> <p><b>Oakridge Counseling Center:</b><br/>           (269) 963-7135</p> <p>Individual Therapy, Eating Disorders, Play Therapy, Testing and Assessment</p> <p><b>Pine Rest Christian Mental Health Services:</b> (800) 678-5500</p> <p>Inpatient, Outpatient, Partial Residential, Residential, Substance Abuse (Fee for assessment)</p> <p><b>Planned Parenthood of South Central Michigan</b><br/>           (269) 964-0885,<br/>           Toll Free: (800) 559-9093</p> <p>Pregnancy Counseling</p> <p><b>Psychological Consultants</b><br/>           (269) 968-2811<br/>           Toll Free: (800) 261-8850</p> <p>Outpatient, Attention Deficit Clinic, Evaluation</p> | <p>“No Means No”<br/> <b>Sexual Assault Line</b><br/>           (877) 666-3267</p> <p><b>Parent Helpline:</b> (800) 942-4357<br/>           Information and Referral</p> <p><b>S.A.F.E. Place (Domestic Violence)</b><br/>           24-Hour Confidential Crisis Line<br/>           (269) 965-SAFE (7233)<br/>           or 1-888-664-9832</p> <p><b>Sexual Assault Services:</b><br/>           (269) 660-3925<br/>           (free) Crisis Line: (888) 383-2192</p> <p><b>Summit Pointe:</b> (269) 966-1460<br/>           Crisis Hotline: (800) 632-5449</p> <p>Individual, Family and Group Counseling,<br/>           Psychological Services</p> <p><b>Crisis Services</b><br/> <b>Battle Creek Health System</b><br/>           (269) 966-8000</p> <p>Emergency Room</p> <p><b>Oaklawn Hospital (Marshall)</b><br/>           (269) 781-4271</p> <p>Emergency Room</p> <p><b>Summit Pointe</b><br/>           Crisis Hotline: (800) 632-5449</p> <p>Private Provider</p> <p><b>Wraparound Services</b><br/>           (269) 441-5904</p> <p><b>Abuse/Neglect</b><br/> <b>Calhoun Child Abuse &amp; Neglect Council</b><br/>           (269) 962-2562</p> <p><b>Child Abuse &amp; Neglect Hotline</b><br/>           (800) 4-A-Child</p> <p><b>Child Protective Services</b><br/>           (24 Hours)<br/>           (269) 966-1331</p> | <p><b>Other Family Resources</b><br/> <b>Community Action</b><br/>           (269) 965-7766/ (269) 441-1359</p> <p>Fatherhood/Male Involvement</p> <p><b>Kinship Support Services</b><br/>           (269) 660-0448</p> <p><b>Parents, Families and Friends of Lesbians and Gays (PFLAG)</b><br/>           (269) 968-2960</p> <p><b>Substance Abuse Council</b><br/>           (269) 968-4699</p> <p>Strengthening Families</p> <p><b>Substance Abuse Prevention Services</b><br/>           (517) 629-2113</p> <p><b>The Arc:</b> (269) 966-2575,<br/>           (800) 400-2941</p> <p>Advocacy, Support Services, Referral, Alternatives to Guardianship</p> |
|---|--|--|---|

# YOUTH SERVICES

## USE OF FREE TIME/ COMMUNITY AND PEERS

**Recreation**  
Battle Creek Family YMCA:  
(269) 963-9622

**Boys & Girls Club:**  
(269) 788-9930

**Community Inclusive  
Recreation:**  
(269) 968-8249

**New Level Sports:**  
(269) 964-9711 x 24

**Recreation Departments**  
Battle Creek: (269) 966-3431  
Albion: (517) 629-7179  
Marshall: (269) 781-5166

**Wattles Park Men's Club:**  
(269) 979-4336  
Year round athletic programs

**After School/Gap Programs**  
21st Century Community

Learning Center  
(Battle Creek Public  
Schools only):  
(269) 965-3883

**Boys & Girls Club:**  
(269) 788-9930

**Community Unlimited  
Blast Program**  
(517) 741-4656

**Homer GAP Program:**  
(517) 568-4461x1540

**Albion Recreation:**  
(517) 629-7179

**Tekonsha Blast Program:**  
(K-12) (517) 767-4123

**Libraries**  
**Albion Public Library:**  
(517) 629-3993

**Athens Community Library:**  
(269) 729-4479

**Homer Public Library:**  
(517) 568-3450

**Marshall District Library:**  
(269) 781-7821

**Tekonsha Township Library:**  
(517) 767-4769

**Willard Library (Battle Creek):**  
(269) 968-8166

**Employment**  
**Connections:** (269) 966-1460  
On-Site Job Training,  
Dependable Workforce,  
Support Services,  
Consulting Services

**Goodwill Industries**  
(269) 964-9455 WIA Program

**Job Corps:** (800) 733-JOBS  
Career Training (Ages 16-24)

**Michigan Rehabilitation  
Services** (269) 968-3311

**Volunteer Service**  
**Albion Volunteer Service**  
Organization: (517) 629-5574

**American Red Cross:**  
(269) 962-7528

**Hands On of Battle Creek:**  
(269) 966-4189

**Junior Achievement:**  
(269) 968-9188

**Marshall Area Community  
Services:** (269) 781-2954

**The Arc:** (269) 966-2575  
Volunteer Job Skills Training

**Urban League of Battle Creek:**  
(269) 962-5553 Future Force  
(Volunteer Job Skills Training)

**Miscellaneous Activities**  
**Boys and Girls Club of Battle  
Creek:**  
(269) 788-9930

**Boy Scouts of America:**  
(269) 962-8513  
(269) 343-4687 or  
1(800) 272-7962

**Community Action:**  
(269) 965-7766  
After School Study and  
Recreation; Literacy After  
School Summer  
Enrichment (LASSE -  
summer only)

**Community Unlimited:**  
(517) 741-4656 (Union City  
Schools)

**Expand Program - Athens:**  
(269) 729-5685

**Family & Children  
Services:** (269) 965-3247  
Out & About

**Girl Scouts Heart of Michigan:**  
(269) 781-8720

**Substance Abuse Prevention  
Services**  
(517) 629-2113  
Positive Youth Development,  
Leadership Development

**MSU Extension 4-H:**  
(269) 781-0784  
(\$10 per year to be a member;  
Ages 5-19)

**Planned Parenthood of South  
Central Michigan**  
(269) 964-0885;  
Toll Free (800) 559-9093  
Project TRUST, Peer Education

**The Arc:** (269) 966-2575  
Life Skills for Developmentally  
Disabled

**Urban League of Battle Creek:**  
(269) 962-5553  
Sojourner Truth Girls Academy,  
Future Force

# YOUTH SERVICES

## ATTITUDES AND SKILLS

- Gang Intervention**  
Urban League of Battle Creek (269) 962-5553  
Youth Leadership Camp
- Young Men in the Making (269) 317-3305
- Mentoring**  
Big Brothers Big Sisters (269) 964-7117
- Boys and Girls Club of Battle Creek (269) 788-9930
- Substance Abuse Prevention Services (517) 629-2113
- Character Education**  
Michigan Youth Challenge Academy (800) 372-0523
- Urban League of Battle Creek (269) 962-5553  
Future Force, Sojourner Truth Girls Academy,  
Restoration
- Young Marines (269) 998-8834  
Leadership and Life Skill Development
- Miscellaneous**  
Boys and Girls Club (269) 788-9930
- Family & Children Services (269) 965-3247  
Pregnancy Counseling, Teen Parent Program,  
Parent Infant Program (parent or child with mental  
illness), Community Living Support & Training
- Substance Abuse Prevention Services (517) 629-2113  
Life Skills Development, Leadership Development,  
Violence Prevention
- Summit Pointe (269) 966-1460  
Youth Services Team
- The Arc Kids on the Block Puppet Troupe  
(269) 966-2575, (800) 400-2941  
(targets children pre-k through 4th grade)

## SUBSTANCE ABUSE

- Support Groups**  
Alcoholics Anonymous, Alanon, Alateen  
(269) 964-7577
- Battle Creek Health System  
Smoking Cessation (269) 966-8000
- Narcotics Anonymous  
(269) 969-8901
- National Drug & Alcohol Treatment  
(800) 662-HELP(4357)
- Treatment**  
Kairos Health Care (989) 777-4357  
Long Term/Short Term, Residential
- Psychological Consultants  
(269) 968-2811
- Prevention**  
Substance Abuse Council  
(269) 968-4699
- Substance Abuse Prevention Services  
(517) 629-2113
- Screening and Referral**  
Kalamazoo Access Center  
(888) 373-6200
- Psychological Consultants  
(269) 968-2811
- Recovery**  
Celebrate Recovery Task Force of  
the Substance Abuse Council  
(269) 968-4699

**YOUTH SERVICES**

**LEGAL SERVICES**

**SCHOOL/ EDUCATION**

Police Emergency 911

Battle Creek Police Department  
Community Services (269) 966-3302

Legal Services of South  
Central Michigan  
(269) 965-3951  
(Toll Free) (800) 688-3951

Marshall City Police (269) 781-2596

Michigan Dept. of State Police  
(269) 968-6115

**Juvenile Diversion**  
The Advocates (269) 968-0624

**Calhoun County Justice Complex**  
Circuit Court, Family Division  
(269) 969-6732

Family Court (269) 969-6775  
Juvenile Probation Services

Friend of the Court (269) 969-6415  
(24 hour computerized case  
info access line)  
(269) 969-6500 - Information Services  
Unit

Office of the Prosecuting Attorney  
(269) 969-6980

Calhoun Intermediate School  
District (269) 781-5141

**Alternative Education**  
Abundant Grace Covenant  
Church (269) 966-4008  
Student Recovery (Novanet)

Calhoun Area Career Center  
(269) 968-2271

Calhoun Community High  
School (269) 565-4782

Marshall Alternative  
(269) 781-1282

Michigan Youth Challenge  
Academy (800) 372-0523

Battle Creek Public School  
District (269) 965-9671

Pregnant/ Parenting Teen  
Program (269) 965-9500

South Hill Academy  
(269) 965-9671  
(middle and high school)

Urbandale Elementary  
(269) 965-9735

**Scholarship Programs**  
Battle Creek Community  
Foundation (269) 962-2181  
Legacy Scholars, GEAR Up,  
other scholarships

Battle Creek Public Schools  
(269) 965-9470  
Carson Scholars Fund  
(grades 4-11)

Lakeview Schools Educational  
Foundation (269) 565-2411

Urban League of Battle Creek  
(269) 962-5553  
Future Force, Sojourner Truth  
Girls Academy

Winship Scholarship  
Foundation (269) 966-6340

**School Liaison Services**  
Summit Pointe (269) 441-6087

The Arc (269) 966-2575  
Educational Advocacy for  
Special Education